

ARG65280 anti-LY6E antibody

Package: 100 µg
Store at: -20°C

Summary

Product Description	Goat Polyclonal antibody recognizes LY6E
Tested Reactivity	Ms
Tested Application	FACS, ICC/IF, IHC
Specificity	Reported variants represent identical protein: NP_002337.1, NP_001120685.1
Host	Goat
Clonality	Polyclonal
Isotype	IgG
Target Name	LY6E
Species	Mouse
Immunogen	SCQEKDHYCIT
Conjugation	Un-conjugated
Alternate Names	RIGE; Lymphocyte antigen 6E; RIG-E; Retinoic acid-induced gene E protein; TSA-1; Ly-6E; Thymic shared antigen 1; SCA-2; SCA2; Stem cell antigen 2

Application Instructions

Application table	Application	Dilution
	FACS	10 µg/ml
	ICC/IF	10 µg/ml
	IHC	Assay - dependent
Application Note	* The dilutions indicate recommended starting dilutions and the optimal dilutions or concentrations should be determined by the scientist.	

Properties

Form	Liquid
Purification	Purified from goat serum by ammonium sulphate precipitation followed by antigen affinity chromatography using the immunizing peptide.
Buffer	Tris saline (pH 7.3), 0.02% Sodium azide and 0.5% BSA
Preservative	0.02% Sodium azide
Stabilizer	0.5% BSA
Concentration	0.5 mg/ml
Storage instruction	For continuous use, store undiluted antibody at 2-8°C for up to a week. For long-term storage, aliquot and store at -20°C or below. Storage in frost free freezers is not recommended. Avoid repeated freeze/thaw cycles. Suggest spin the vial prior to opening. The antibody solution should be gently mixed

before use.

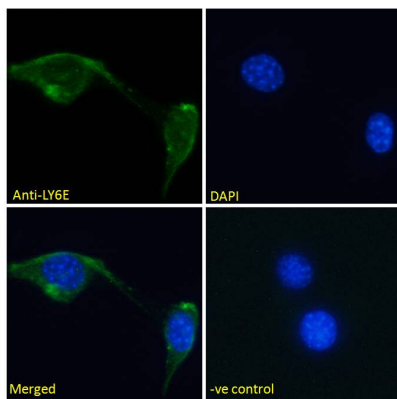
Note

For laboratory research only, not for drug, diagnostic or other use.

Bioinformation

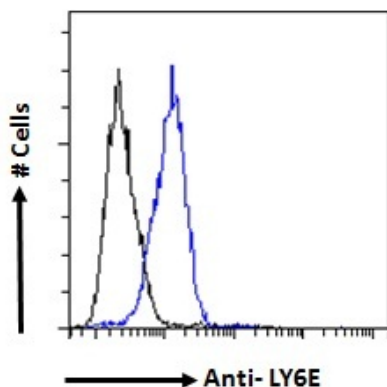
Database links	GeneID: 17069 Mouse Swiss-port # Q64253 Mouse
Gene Symbol	Ly6e
Gene Full Name	lymphocyte antigen 6 complex, locus E
Function	Involved in T-cell development. [UniProt]
Research Area	Cell Biology and Cellular Response antibody
Calculated Mw	14 kDa

Images



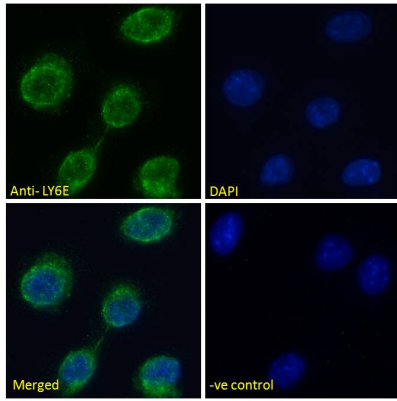
ARG65280 anti-LY6E antibody ICC/IF image

Immunofluorescence: Paraformaldehyde fixed NIH/3T3 cells permeabilized with 0.15% Triton. Cells were stained with ARG65280 anti-LY6E antibody (green) at 10 µg/ml dilution for 1 hour. DAPI (blue) for nuclear staining. Negative control: Unimmunized goat IgG (green) at 10 µg/ml dilution.



ARG65280 anti-LY6E antibody FACS image

Flow Cytometry: Paraformaldehyde-fixed NIH/3T3 cells permeabilized with 0.5% Triton. Cells were stained with ARG65280 anti-LY6E antibody (blue line) at 10 µg/ml dilution for 1 hour, followed by incubation with Alexa Fluor 488 labelled secondary antibody. IgG control: Unimmunized goat IgG (black line).



ARG65280 anti-LY6E antibody ICC/IF image

Immunofluorescence: Paraformaldehyde fixed L929 cells permeabilized with 0.15% Triton. Cells were stained with ARG65280 anti-LY6E antibody (green) at 10 $\mu\text{g}/\text{ml}$ dilution for 1 hour. DAPI (blue) for nuclear staining. Negative control: Unimmunized goat IgG (green) at 10 $\mu\text{g}/\text{ml}$ dilution.