

ARG65274 anti-Spondin 2 / Mindin antibody

Package: 100 µg
Store at: -20°C

Summary

Product Description	Goat Polyclonal antibody recognizes Spondin 2 / Mindin
Tested Reactivity	Hu
Predict Reactivity	Ms, Rat, Cow
Tested Application	WB
Specificity	Reported variants NP_036577.1 and NP_001121797.1 represent identical protein.
Host	Goat
Clonality	Polyclonal
Isotype	IgG
Target Name	Spondin 2 / Mindin
Species	Human
Immunogen	C-RKNQYVSNGLRDFA
Conjugation	Un-conjugated
Alternate Names	Mindin; Spondin-2; Differentially expressed in cancerous and non-cancerous lung cells 1; M-SPONDIN; DIL-1; MINDIN; DIL1

Application Instructions

Application table	Application	Dilution
	WB	0.5 - 1.5 µg/ml
Application Note	WB: Recommend incubate at RT for 1h. * The dilutions indicate recommended starting dilutions and the optimal dilutions or concentrations should be determined by the scientist.	

Properties

Form	Liquid
Purification	Purified from goat serum by ammonium sulphate precipitation followed by antigen affinity chromatography using the immunizing peptide.
Buffer	Tris saline (pH 7.3), 0.02% Sodium azide and 0.5% BSA
Preservative	0.02% Sodium azide
Stabilizer	0.5% BSA
Concentration	0.5 mg/ml
Storage instruction	For continuous use, store undiluted antibody at 2-8°C for up to a week. For long-term storage, aliquot and store at -20°C or below. Storage in frost free freezers is not recommended. Avoid repeated freeze/thaw cycles. Suggest spin the vial prior to opening. The antibody solution should be gently mixed

before use.

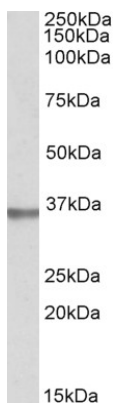
Note

For laboratory research only, not for drug, diagnostic or other use.

Bioinformation

Database links	GeneID: 10417 Human Swiss-port # Q9BUD6 Human
Gene Symbol	SPON2
Gene Full Name	spondin 2, extracellular matrix protein
Function	Cell adhesion protein that promotes adhesion and outgrowth of hippocampal embryonic neurons. Binds directly to bacteria and their components and functions as an opsonin for macrophage phagocytosis of bacteria. Essential in the initiation of the innate immune response and represents a unique pattern-recognition molecule in the ECM for microbial pathogens (By similarity). Binds bacterial lipopolysaccharide (LPS). [UniProt]
Research Area	Immune System antibody; Neuroscience antibody; Signaling Transduction antibody
Calculated Mw	36 kDa

Images



ARG65274 anti-Spondin 2 / Mindin antibody WB image

Western Blot: Human Prostate lysate (35 µg protein in RIPA buffer) stained with ARG65274 anti-Spondin 2 / Mindin antibody at 1 µg/ml dilution.