

## ARG65243 anti-Copine 1 antibody

Package: 100 µg  
Store at: -20°C

### Summary

Product Description	Goat Polyclonal antibody recognizes Copine 1
Tested Reactivity	Hu
Tested Application	WB
Specificity	This antibody is expected to recognize isoform a and b (NP_003906.2; NP_690902.1). Reported variants represent identical protein: NP_690905.1, NP_690902.1, NP_690903.1, NP_690906.1, NP_690904.1, NP_690907.1, NP_690908.1.
Host	Goat
Clonality	Polyclonal
Isotype	IgG
Target Name	Copine 1
Species	Human
Immunogen	C-APLKPLPPSAKDPA
Conjugation	Un-conjugated
Alternate Names	CPN1; COPN1; Copine-1; Copine I

### Application Instructions

Application table	Application	Dilution
	WB	0.1 - 0.3 µg/ml
Application Note	WB: Recommend incubate at RT for 1h. * The dilutions indicate recommended starting dilutions and the optimal dilutions or concentrations should be determined by the scientist.	

### Properties

Form	Liquid
Purification	Purified from goat serum by ammonium sulphate precipitation followed by antigen affinity chromatography using the immunizing peptide.
Buffer	Tris saline (pH 7.3), 0.02% Sodium azide and 0.5% BSA
Preservative	0.02% Sodium azide
Stabilizer	0.5% BSA
Concentration	0.5 mg/ml
Storage instruction	For continuous use, store undiluted antibody at 2-8°C for up to a week. For long-term storage, aliquot and store at -20°C or below. Storage in frost free freezers is not recommended. Avoid repeated freeze/thaw cycles. Suggest spin the vial prior to opening. The antibody solution should be gently mixed before use.

Note For laboratory research only, not for drug, diagnostic or other use.

## Bioinformation

---

Database links [GeneID: 8904 Human](#)

[Swiss-port # Q99829 Human](#)

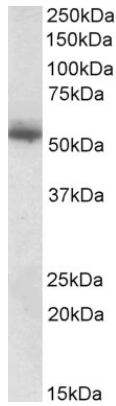
**Background** Calcium-dependent membrane-binding proteins may regulate molecular events at the interface of the cell membrane and cytoplasm. This gene encodes a calcium-dependent protein that also contains two N-terminal type II C2 domains and an integrin A domain-like sequence in the C-terminus. However, the encoded protein does not contain a predicted signal sequence or transmembrane domains. This protein has a broad tissue distribution and it may function in membrane trafficking. This gene and the gene for RNA binding motif protein 12 overlap at map location 20q11.21. Alternate splicing results in multiple transcript variants encoding different proteins. [provided by RefSeq, Aug 2008]

**Research Area** Signaling Transduction antibody

**Calculated Mw** 59 kDa

## Images

---



ARG65243 anti-Copine 1 antibody WB image

Western Blot: Human Skin lysate (35 µg protein in RIPA buffer) stained with ARG65243 anti-Copine 1 antibody at 0.1 µg/ml dilution.