

ARG65210 anti-CHCHD3 antibody

Package: 100 µg
Store at: -20°C

Summary

Product Description	Goat Polyclonal antibody recognizes CHCHD3
Tested Reactivity	Hu
Predict Reactivity	Ms, Rat, Cow, Dog, Sheep
Tested Application	IHC-P, WB
Host	Goat
Clonality	Polyclonal
Isotype	IgG
Target Name	CHCHD3
Species	Human
Immunogen	KFKRYESHPCAD
Conjugation	Un-conjugated
Alternate Names	Coiled-coil-helix-coiled-coil-helix domain-containing protein 3; Mic19; MINOS3; PPP1R22; MICOS complex subunit MIC19

Application Instructions

Application table	Application	Dilution
	IHC-P	5 µg/ml
	WB	1 - 3 µg/ml
Application Note	WB: Recommend incubate at RT for 1h. IHC-P: Antigen Retrieval: Steam tissue section in Citrate buffer (pH 6.0). * The dilutions indicate recommended starting dilutions and the optimal dilutions or concentrations should be determined by the scientist.	

Properties

Form	Liquid
Purification	Purified from goat serum by ammonium sulphate precipitation followed by antigen affinity chromatography using the immunizing peptide.
Buffer	Tris saline (pH 7.3), 0.02% Sodium azide and 0.5% BSA
Preservative	0.02% Sodium azide
Stabilizer	0.5% BSA
Concentration	0.5 mg/ml
Storage instruction	For continuous use, store undiluted antibody at 2-8°C for up to a week. For long-term storage, aliquot and store at -20°C or below. Storage in frost free freezers is not recommended. Avoid repeated

freeze/thaw cycles. Suggest spin the vial prior to opening. The antibody solution should be gently mixed before use.

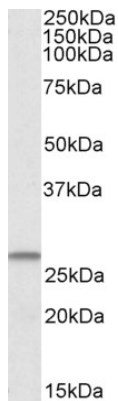
Note

For laboratory research only, not for drug, diagnostic or other use.

Bioinformation

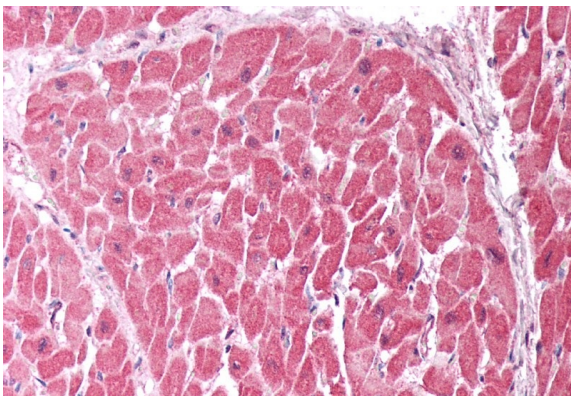
Database links	GeneID: 54927 Human Swiss-port # Q9NX63 Human
Gene Symbol	CHCHD3
Gene Full Name	coiled-coil-helix-coiled-coil-helix domain containing 3
Function	Component of the MICOS complex, a large protein complex of the mitochondrial inner membrane that plays crucial roles in the maintenance of crista junctions, inner membrane architecture, and formation of contact sites to the outer membrane. Has also been shown to function as a transcription factor which binds to the BAG1 promoter and represses BAG1 transcription. [UniProt]
Research Area	Controls and Markers antibody; Metabolism antibody; Signaling Transduction antibody
Calculated Mw	26 kDa

Images



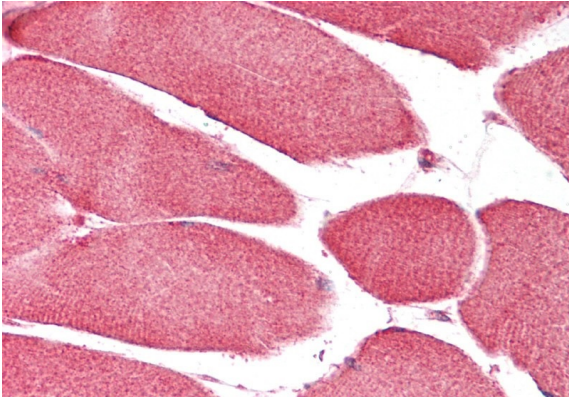
ARG65210 anti-CHCHD3 antibody WB image

Western Blot: Human Heart lysate (35 µg protein in RIPA buffer) stained with ARG65210 anti-CHCHD3 antibody at 1 µg/ml dilution.



ARG65210 anti-CHCHD3 antibody IHC-P image

Immunohistochemistry: Paraffin-embedded Human heart tissue. Antigen Retrieval: Steam tissue section in Citrate buffer (pH 6.0). The tissue section was stained with ARG65210 anti-CHCHD3 antibody at 5 µg/ml dilution followed by AP-staining.



ARG65210 anti-CHCHD3 antibody IHC-P image

Immunohistochemistry: Paraffin-embedded Human skeletal muscle tissue. Antigen Retrieval: Steam tissue section in Citrate buffer (pH 6.0). The tissue section was stained with ARG65210 anti-CHCHD3 antibody at 5 μ g/ml dilution followed by AP-staining.