

ARG65187 anti-Themis antibody

Package: 100 µg
Store at: -20°C

Summary

Product Description	Goat Polyclonal antibody recognizes Themis
Tested Reactivity	Ms
Tested Application	WB
Host	Goat
Clonality	Polyclonal
Isotype	IgG
Target Name	Themis
Species	Mouse
Immunogen	C-EERTINLPKSLKSH
Conjugation	Un-conjugated
Alternate Names	C6orf207; C6orf190; SPOT; Thymocyte-expressed molecule involved in selection; bA325O24.3; Protein THEMIS; bA325O24.4; GASP; TSEPA

Application Instructions

Application table	Application	Dilution
	WB	1 - 3 µg/ml
Application Note	WB: Recommend incubate at RT for 1h. * The dilutions indicate recommended starting dilutions and the optimal dilutions or concentrations should be determined by the scientist.	

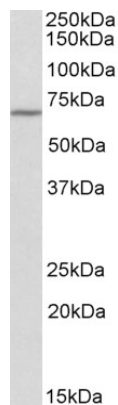
Properties

Form	Liquid
Purification	Purified from goat serum by ammonium sulphate precipitation followed by antigen affinity chromatography using the immunizing peptide.
Buffer	Tris saline (pH 7.3), 0.02% Sodium azide and 0.5% BSA
Preservative	0.02% Sodium azide
Stabilizer	0.5% BSA
Concentration	0.5 mg/ml
Storage instruction	For continuous use, store undiluted antibody at 2-8°C for up to a week. For long-term storage, aliquot and store at -20°C or below. Storage in frost free freezers is not recommended. Avoid repeated freeze/thaw cycles. Suggest spin the vial prior to opening. The antibody solution should be gently mixed before use.
Note	For laboratory research only, not for drug, diagnostic or other use.

Bioinformation

Database links	GeneID: 210757 Mouse Swiss-port # Q8BGW0 Mouse
Gene Symbol	Themis
Gene Full Name	thymocyte selection associated
Background	This gene encodes a protein that plays a regulatory role in both positive and negative T-cell selection during late thymocyte development. The protein functions through T-cell antigen receptor signaling, and is necessary for proper lineage commitment and maturation of T-cells. Alternative splicing results in multiple transcript variants. [provided by RefSeq, Sep 2009]
Function	Plays a central role in late thymocyte development by controlling both positive and negative T-cell selection. Required to sustain and/or integrate signals required for proper lineage commitment and maturation of T-cells. Regulates T-cell development through T-cell antigen receptor (TCR) signaling and in particular through the regulation of calcium influx and phosphorylation of Erk. [UniProt]
Research Area	Developmental Biology antibody; Immune System antibody
Calculated Mw	73 kDa
PTM	Phosphorylated on Tyr residues quickly after TCR stimulation.

Images



ARG65187 anti-Themis antibody WB image

Western Blot: Mouse Spleen lysate (35 µg protein in RIPA buffer) stained with ARG65187 anti-Themis antibody at 0.3 µg/ml dilution.