

ARG65174 anti-LSP1 antibody

Package: 100 µg
Store at: -20°C

Summary

Product Description	Goat Polyclonal antibody recognizes LSP1
Tested Reactivity	Hu
Predict Reactivity	Cow, Dog
Tested Application	WB
Specificity	This antibody is expected to recognize both reported isoforms (NP_002330.1; NP_001013271.1). Reported variants represent identical protein: NP_001013273.1, NP_001013271.1, NP_001013272.1
Host	Goat
Clonality	Polyclonal
Isotype	IgG
Target Name	LSP1
Species	Human
Immunogen	C-ASTKSRWETGEVQAQ
Conjugation	Un-conjugated
Alternate Names	Lymphocyte-specific protein 1; pp52; 52 kDa phosphoprotein; 47 kDa actin-binding protein; WP34; Lymphocyte-specific antigen WP34

Application Instructions

Application table	Application	Dilution
	WB	1 - 3 µg/ml

Application Note WB: Recommend incubate at RT for 1h.
* The dilutions indicate recommended starting dilutions and the optimal dilutions or concentrations should be determined by the scientist.

Properties

Form	Liquid
Purification	Purified from goat serum by ammonium sulphate precipitation followed by antigen affinity chromatography using the immunizing peptide.
Buffer	Tris saline (pH 7.3), 0.02% Sodium azide and 0.5% BSA
Preservative	0.02% Sodium azide
Stabilizer	0.5% BSA
Concentration	0.5 mg/ml
Storage instruction	For continuous use, store undiluted antibody at 2-8°C for up to a week. For long-term storage, aliquot and store at -20°C or below. Storage in frost free freezers is not recommended. Avoid repeated

freeze/thaw cycles. Suggest spin the vial prior to opening. The antibody solution should be gently mixed before use.

Note

For laboratory research only, not for drug, diagnostic or other use.

Bioinformation

Database links

[GeneID: 4046 Human](#)

[Swiss-port # P33241 Human](#)

Background

This gene encodes an intracellular F-actin binding protein. The protein is expressed in lymphocytes, neutrophils, macrophages, and endothelium and may regulate neutrophil motility, adhesion to fibrinogen matrix proteins, and transendothelial migration. Alternative splicing results in multiple transcript variants encoding different isoforms. [provided by RefSeq, Jul 2008]

Research Area

Immune System antibody; Signaling Transduction antibody

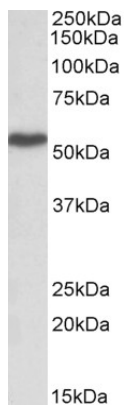
Calculated Mw

37 kDa

PTM

Phosphorylated by casein kinase II, protein kinase C and MAPKAPK2. Phosphorylation by PKC induces translocation from membrane to cytoplasm. Phosphorylation by MAPKAPK2 may regulate neutrophil chemotaxis (By similarity).

Images



ARG65174 anti-LSP1 antibody WB image

Western Blot: Peripheral Blood Lymphocytes lysate (35 µg protein in RIPA buffer) stained with ARG65174 anti-LSP1 (aa261-275) antibody at 1 µg/ml dilution.