

## ARG65166 anti-Stabilin 1 antibody

Package: 100 µg  
Store at: -20°C

### Summary

Product Description	Goat Polyclonal antibody recognizes Stabilin 1
Tested Reactivity	Hu
Predict Reactivity	Cow, Dog, Pig
Tested Application	IHC-P
Host	Goat
Clonality	Polyclonal
Isotype	IgG
Target Name	Stabilin 1
Species	Human
Immunogen	C-DFPDTQRILTVK
Conjugation	Un-conjugated
Alternate Names	STAB-1; FEX1; Fasciclin, EGF-like, laminin-type EGF-like and link domain-containing scavenger receptor 1; FEEL-1; Stabilin-1; FELE-1; MS-1 antigen; CLEVER-1

### Application Instructions

Application table	Application	Dilution
	IHC-P	3 - 5 µg/ml
Application Note	IHC-P: Antigen Retrieval: Steam tissue section in Citrate buffer (pH 6.0). * The dilutions indicate recommended starting dilutions and the optimal dilutions or concentrations should be determined by the scientist.	

### Properties

Form	Liquid
Purification	Purified from goat serum by ammonium sulphate precipitation followed by antigen affinity chromatography using the immunizing peptide.
Buffer	Tris saline (pH 7.3), 0.02% Sodium azide and 0.5% BSA
Preservative	0.02% Sodium azide
Stabilizer	0.5% BSA
Concentration	0.5 mg/ml
Storage instruction	For continuous use, store undiluted antibody at 2-8°C for up to a week. For long-term storage, aliquot and store at -20°C or below. Storage in frost free freezers is not recommended. Avoid repeated freeze/thaw cycles. Suggest spin the vial prior to opening. The antibody solution should be gently mixed before use.

Note For laboratory research only, not for drug, diagnostic or other use.

## Bioinformation

---

Database links [GeneID: 23166 Human](#)

[Swiss-port # Q9NY15 Human](#)

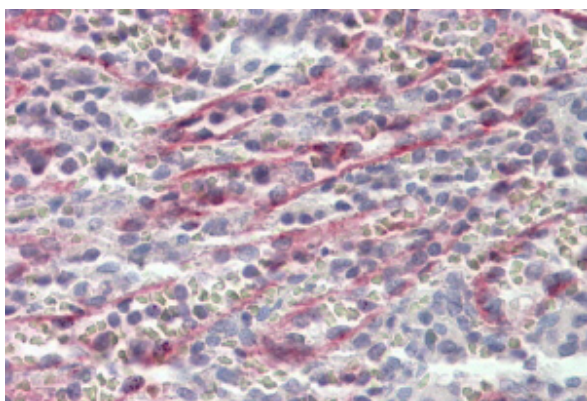
**Background** This gene encodes a large, transmembrane receptor protein which may function in angiogenesis, lymphocyte homing, cell adhesion, or receptor scavenging. The protein contains 7 fasciclin, 16 epidermal growth factor (EGF)-like, and 2 laminin-type EGF-like domains as well as a C-type lectin-like hyaluronan-binding Link module. The protein is primarily expressed on sinusoidal endothelial cells of liver, spleen, and lymph node. The receptor has been shown to endocytose ligands such as low density lipoprotein, Gram-positive and Gram-negative bacteria, and advanced glycosylation end products. Supporting its possible role as a scavenger receptor, the protein rapidly cycles between the plasma membrane and early endosomes. [provided by RefSeq, Jul 2008]

**Research Area** Cell Biology and Cellular Response antibody; Signaling Transduction antibody

**Calculated Mw** 275 kDa

## Images

---



ARG65166 anti-Stabilin 1 antibody IHC-P image

Immunohistochemistry: paraffin embedded Human Spleen. (Steamed antigen retrieval with citrate buffer pH 6) stained with ARG65166 anti-Stabilin 1 antibody at 3.8  $\mu$ g/ml dilution followed by AP-staining.