

## ARG65128 anti-SPARTIN antibody

Package: 100 µg  
Store at: -20°C

### Summary

Product Description	Goat Polyclonal antibody recognizes SPARTIN
Tested Reactivity	Hu
Tested Application	ICC/IF, WB
Host	Goat
Clonality	Polyclonal
Isotype	IgG
Target Name	SPARTIN
Species	Human
Immunogen	C-EASGTDVKQLDQGNK
Conjugation	Un-conjugated
Alternate Names	Spastic paraplegia 20 protein; SPARTIN; Trans-activated by hepatitis C virus core protein 1; Spartin; TAHCCP1

### Application Instructions

Application table	Application	Dilution
	ICC/IF	Assay - dependent
	WB	1 - 3 µg/ml

**Application Note**  
WB: Recommend incubate at RT for 1h.  
\* The dilutions indicate recommended starting dilutions and the optimal dilutions or concentrations should be determined by the scientist.

### Properties

Form	Liquid
Purification	Purified from goat serum by antigen affinity chromatography.
Buffer	Tris saline (pH 7.3), 0.02% Sodium azide and 0.5% BSA.
Preservative	0.02% Sodium azide
Stabilizer	0.5% BSA
Concentration	0.5 mg/ml
Storage instruction	For continuous use, store undiluted antibody at 2-8°C for up to a week. For long-term storage, aliquot and store at -20°C or below. Storage in frost free freezers is not recommended. Avoid repeated freeze/thaw cycles. Suggest spin the vial prior to opening. The antibody solution should be gently mixed before use.
Note	For laboratory research only, not for drug, diagnostic or other use.

## Bioinformation

### Database links

[GeneID: 23111 Human](#)

[Swiss-port # Q8NOX7 Human](#)

### Background

This gene encodes a protein containing a MIT (Microtubule Interacting and Trafficking molecule) domain, and is implicated in regulating endosomal trafficking and mitochondria function. The protein localizes to mitochondria and partially co-localizes with microtubules. Stimulation with epidermal growth factor (EGF) results in protein translocation to the plasma membrane, and the protein functions in the degradation and intracellular trafficking of EGF receptor. Multiple alternatively spliced variants, encoding the same protein, have been identified. Mutations associated with this gene cause autosomal recessive spastic paraplegia 20 (Troyer syndrome). [provided by RefSeq, Nov 2008]

### Research Area

Cell Biology and Cellular Response antibody; Gene Regulation antibody

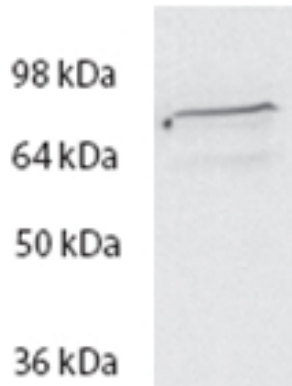
### Calculated Mw

73 kDa

### PTM

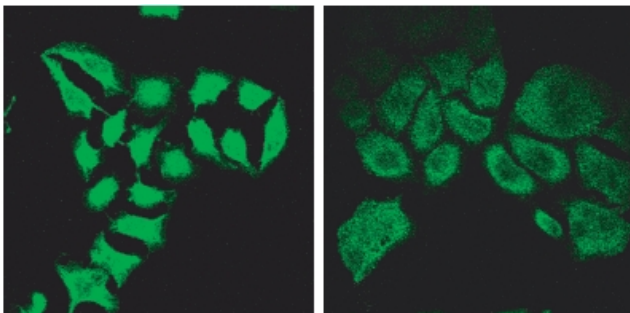
Ubiquitinated; ubiquitination does not require ITCH and WWP1.

## Images



ARG65128 anti-SPARTIN antibody WB image

Western Blot: HeLa lysate (35  $\mu$ g protein in RIPA buffer) stained with ARG65128 anti-SPARTIN antibody at 2  $\mu$ g/ml dilution.



ARG65128 anti-SPARTIN antibody ICC/IF image

Immunofluorescence: methanol-fixed HeLa stained with ARG65128 anti-SPARTIN antibody (2 $\mu$ g/ml) before (left) and after (right) introduction of siRNA.