

ARG65067 anti-CSMD1 antibody

Package: 100 µg
Store at: -20°C

Summary

Product Description	Goat Polyclonal antibody recognizes CSMD1
Tested Reactivity	Hu
Predict Reactivity	Ms, Rat, Cow
Tested Application	WB
Host	Goat
Clonality	Polyclonal
Isotype	IgG
Target Name	CSMD1
Species	Human
Immunogen	C-KGVREVNETHVTKTP
Conjugation	Un-conjugated
Alternate Names	PPP1R24; CUB and sushi multiple domains protein 1; CUB and sushi domain-containing protein 1

Application Instructions

Application table	Application	Dilution
	WB	1 - 3 µg/ml
Application Note	WB: Recommend incubate at RT for 1h. * The dilutions indicate recommended starting dilutions and the optimal dilutions or concentrations should be determined by the scientist.	

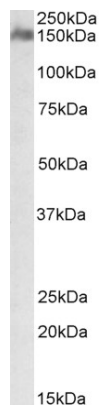
Properties

Form	Liquid
Purification	Purified from goat serum by ammonium sulphate precipitation followed by antigen affinity chromatography using the immunizing peptide.
Buffer	Tris saline (pH 7.3), 0.02% Sodium azide and 0.5% BSA
Preservative	0.02% Sodium azide
Stabilizer	0.5% BSA
Concentration	0.5 mg/ml
Storage instruction	For continuous use, store undiluted antibody at 2-8°C for up to a week. For long-term storage, aliquot and store at -20°C or below. Storage in frost free freezers is not recommended. Avoid repeated freeze/thaw cycles. Suggest spin the vial prior to opening. The antibody solution should be gently mixed before use.
Note	For laboratory research only, not for drug, diagnostic or other use.

Bioinformation

Database links	GeneID: 64478 Human Swiss-port # Q96PZ7 Human
Gene Symbol	CSMD1
Gene Full Name	CUB and Sushi multiple domains 1
Function	Potential suppressor of squamous cell carcinomas. [UniProt]
Research Area	Cancer antibody
Calculated Mw	389 kDa

Images



ARG65067 anti-CSMD1 antibody WB image

Western Blot: Human Cerebellum lysate (35 μ g protein in RIPA buffer) stained with ARG65067 anti-CSMD1 antibody at 1 μ g/ml dilution.