

**ARG65058**  
anti-SATB1 antibodyPackage: 100 µg  
Store at: -20°C

### Summary

Product Description	Goat Polyclonal antibody recognizes SATB1
Tested Reactivity	Hu
Predict Reactivity	Ms, Rat, Cow
Tested Application	IHC-P, WB
Specificity	Reported variants NP_001124482.1 and NP_002962.1 represent identical protein.
Host	Goat
Clonality	Polyclonal
Isotype	IgG
Target Name	SATB1
Species	Human
Immunogen	C-ESDEENRQKTRPRT
Conjugation	Un-conjugated
Alternate Names	Special AT-rich sequence-binding protein 1; DNA-binding protein SATB1

### Application Instructions

Application table	Application	Dilution
	IHC-P	3 - 5 µg/ml
	WB	0.3 - 1 µg/ml
Application Note	IHC-P: Antigen Retrieval: Steam tissue section in Citrate buffer (pH 6.0). WB: Recommend incubate at RT for 1h. * The dilutions indicate recommended starting dilutions and the optimal dilutions or concentrations should be determined by the scientist.	

### Properties

Form	Liquid
Purification	Purified from goat serum by ammonium sulphate precipitation followed by antigen affinity chromatography using the immunizing peptide.
Buffer	Tris saline (pH 7.3), 0.02% Sodium azide and 0.5% BSA
Preservative	0.02% Sodium azide
Stabilizer	0.5% BSA
Concentration	0.5 mg/ml
Storage instruction	For continuous use, store undiluted antibody at 2-8°C for up to a week. For long-term storage, aliquot and store at -20°C or below. Storage in frost free freezers is not recommended. Avoid repeated

freeze/thaw cycles. Suggest spin the vial prior to opening. The antibody solution should be gently mixed before use.

Note

For laboratory research only, not for drug, diagnostic or other use.

## Bioinformation

Database links

[GeneID: 6304 Human](#)

[Swiss-port # Q01826 Human](#)

Background

This gene encodes a matrix protein which binds nuclear matrix and scaffold-associating DNAs through a unique nuclear architecture. The protein recruits chromatin-remodeling factors in order to regulate chromatin structure and gene expression. Multiple transcript variants encoding different isoforms have been found for this gene. [provided by RefSeq, Sep 2010]

Research Area

Gene Regulation antibody

Calculated Mw

86 kDa

PTM

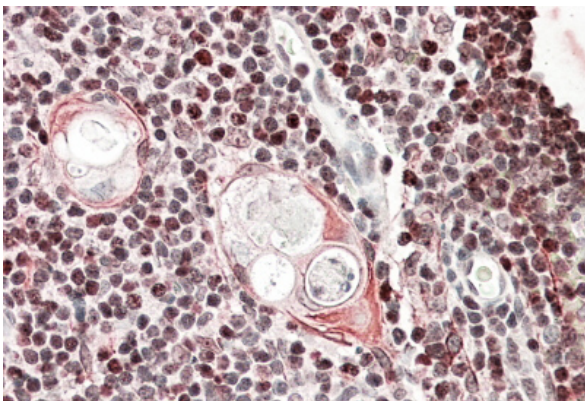
Sumoylated. Sumoylation promotes cleavage by caspases. Phosphorylated by PKC. Acetylated by PCAF. Phosphorylated form interacts with HDAC1, but unphosphorylated form interacts with PCAF. DNA binding properties are activated by phosphorylation and inactivated by acetylation. In opposition, gene expression is down-regulated by phosphorylation but up-regulated by acetylation. Cleaved at Asp-254 by caspase-3 and caspase-6 during T-cell apoptosis in thymus and during B-cell stimulation. The cleaved forms cannot dimerize and lose transcription regulation function because of impaired DNA and chromatin association.

## Images



ARG65058 anti-SATB1 antibody WB image

Western Blot: MOLT4 lysate (35 µg protein in RIPA buffer) stained with ARG65058 anti-SATB1 antibody at 0.3 µg/ml dilution.



ARG65058 anti-SATB1 antibody IHC-P image

Immunohistochemistry: paraffin embedded Human Thymus. (Steamed antigen retrieval with citrate buffer pH 6) stained with ARG65058 anti-SATB1 antibody at 3.8 µg/ml dilution followed by AP-staining.