

ARG64969 anti-SRF antibody

Package: 100 µg
Store at: -20°C

Summary

| | |
|---------------------|---|
| Product Description | Goat Polyclonal antibody recognizes SRF |
| Tested Reactivity | Hu |
| Predict Reactivity | Ms, Cow, Dog |
| Tested Application | WB |
| Host | Goat |
| Clonality | Polyclonal |
| Isotype | IgG |
| Target Name | SRF |
| Species | Human |
| Immunogen | C-QASPSRDSSTDLTQ |
| Conjugation | Un-conjugated |
| Alternate Names | SRF; MCM1; Serum response factor |

Application Instructions

| Application table | Application | Dilution |
|-------------------|-------------|-------------|
| | WB | 1 - 3 µg/ml |

Application Note
WB: Recommend incubate at RT for 1h.
* The dilutions indicate recommended starting dilutions and the optimal dilutions or concentrations should be determined by the scientist.

Properties

| | |
|---------------------|--|
| Form | Liquid |
| Purification | Purified from goat serum by ammonium sulphate precipitation followed by antigen affinity chromatography using the immunizing peptide. |
| Buffer | Tris saline (pH 7.3), 0.02% Sodium azide and 0.5% BSA |
| Preservative | 0.02% Sodium azide |
| Stabilizer | 0.5% BSA |
| Concentration | 0.5 mg/ml |
| Storage instruction | For continuous use, store undiluted antibody at 2-8°C for up to a week. For long-term storage, aliquot and store at -20°C or below. Storage in frost free freezers is not recommended. Avoid repeated freeze/thaw cycles. Suggest spin the vial prior to opening. The antibody solution should be gently mixed before use. |
| Note | For laboratory research only, not for drug, diagnostic or other use. |

Bioinformation

Database links

[GeneID: 6722 Human](#)

[Swiss-port # P11831 Human](#)

Background

This gene encodes a ubiquitous nuclear protein that stimulates both cell proliferation and differentiation. It is a member of the MADS (MCM1, Agamous, Deficiens, and SRF) box superfamily of transcription factors. This protein binds to the serum response element (SRE) in the promoter region of target genes. This protein regulates the activity of many immediate-early genes, for example c-fos, and thereby participates in cell cycle regulation, apoptosis, cell growth, and cell differentiation. This gene is the downstream target of many pathways; for example, the mitogen-activated protein kinase pathway (MAPK) that acts through the ternary complex factors (TCFs). [provided by RefSeq, Jul 2008]

Research Area

Cell Biology and Cellular Response antibody; Controls and Markers antibody; Developmental Biology antibody; Gene Regulation antibody

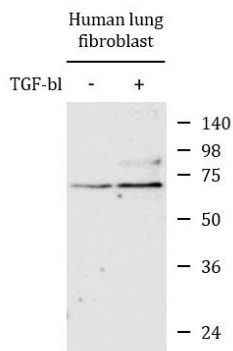
Calculated Mw

52 kDa

PTM

Phosphorylated by PRKDC.

Images



ARG64969 anti-SRF antibody WB image

Western blot: Untreated (left lane) and TGF- β 1-treated (right lane) primary cultured Human lung fibroblast lysate stained with ARG64969 anti-SRF antibody at 1 μ g/ml dilution, overnight at 4°C.