

ARG64958 anti-CD11a / LFA1 alpha antibody

Package: 100 µg
Store at: -20°C

Summary

Product Description	Goat Polyclonal antibody recognizes CD11a / LFA1 alpha
Tested Reactivity	Hu
Tested Application	IHC-P, WB
Specificity	This antibody is expected to recognize both reported isoforms (NP_002200.2; NP_001107852.1).
Host	Goat
Clonality	Polyclonal
Isotype	IgG
Target Name	CD11a / LFA1 alpha
Species	Human
Immunogen	C-YQVRIQPSIHDHN
Conjugation	Un-conjugated
Alternate Names	Leukocyte adhesion glycoprotein LFA-1 alpha chain; LFA1A; LFA-1A; Integrin alpha-L; CD11A; Leukocyte function-associated molecule 1 alpha chain; LFA-1; CD11 antigen-like family member A; CD antigen CD11a

Application Instructions

Application table	Application	Dilution
	IHC-P	2 - 4 µg/ml
	WB	0.5 - 2 µg/ml

Application Note
WB: Recommend incubate at RT for 1h.
IHC-P: Antigen Retrieval: Microwaved or steamed tissue section in Citrate buffer (pH 6.0).
* The dilutions indicate recommended starting dilutions and the optimal dilutions or concentrations should be determined by the scientist.

Properties

Form	Liquid
Purification	Purified from goat serum by ammonium sulphate precipitation followed by antigen affinity chromatography using the immunizing peptide.
Buffer	Tris saline (pH 7.3), 0.02% Sodium azide and 0.5% BSA
Preservative	0.02% Sodium azide
Stabilizer	0.5% BSA
Concentration	0.5 mg/ml
Storage instruction	For continuous use, store undiluted antibody at 2-8°C for up to a week. For long-term storage, aliquot

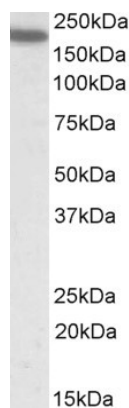
and store at -20°C or below. Storage in frost free freezers is not recommended. Avoid repeated freeze/thaw cycles. Suggest spin the vial prior to opening. The antibody solution should be gently mixed before use.

Note For laboratory research only, not for drug, diagnostic or other use.

Bioinformation

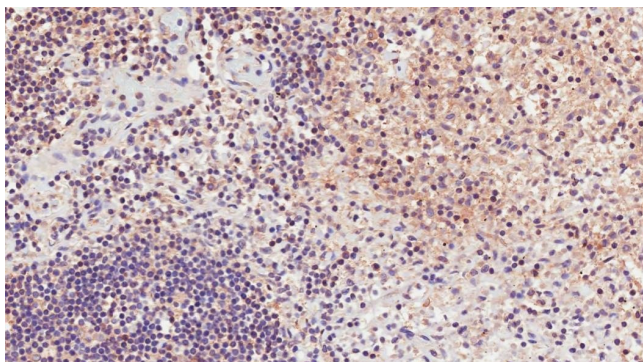
Database links	GeneID: 3683 Human Swiss-port # P20701 Human
Background	ITGAL encodes the integrin alpha L chain. Integrins are heterodimeric integral membrane proteins composed of an alpha chain and a beta chain. This I-domain containing alpha integrin combines with the beta 2 chain (ITGB2) to form the integrin lymphocyte function-associated antigen-1 (LFA-1), which is expressed on all leukocytes. LFA-1 plays a central role in leukocyte intercellular adhesion through interactions with its ligands, ICAMs 1-3 (intercellular adhesion molecules 1 through 3), and also functions in lymphocyte costimulatory signaling. Two transcript variants encoding different isoforms have been found for this gene. [provided by RefSeq, Jul 2008]
Research Area	Developmental Biology antibody; Immune System antibody; Signaling Transduction antibody
Calculated Mw	129 kDa
PTM	In resting T-cells, up to 40% of surface ITGAL is constitutively phosphorylated. Phosphorylation causes conformational changes needed for ligand binding and is necessary for activation by some physiological agents.

Images



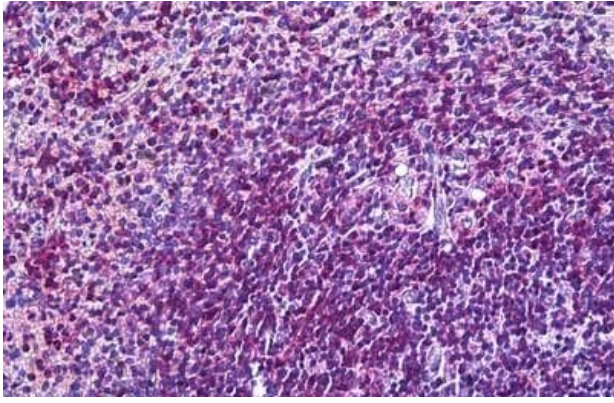
ARG64958 anti-CD11a / LFA1 alpha antibody WB image

Western blot: Human Spleen lysate (35 µg protein in RIPA buffer) stained with ARG64958 anti-CD11a / LFA1 alpha antibody at 0.5 µg/ml dilution.



ARG64958 anti-CD11a / LFA1 alpha antibody IHC-P image

Immunohistochemistry: Paraffin-embedded Human lymph node tissue. Antigen Retrieval: Microwaved tissue section in Citrate buffer (pH 6.0). The tissue section was stained with ARG64958 anti-CD11a / LFA1 alpha antibody at 2 µg/ml dilution followed by HRP-staining.



ARG64958 anti-CD11a / LFA1 alpha antibody IHC-P image

Immunohistochemistry: Paraffin-embedded Human spleen tissue.
Antigen Retrieval: Steam tissue section in Citrate buffer (pH 6.0). The tissue section was stained with ARG64958 anti-CD11a / LFA1 alpha antibody at 3.75 µg/ml dilution followed by AP-staining.