

## ARG64956 anti-KEO4 / ERLIN1 antibody

Package: 100 µg  
Store at: -20°C

### Summary

Product Description	Goat Polyclonal antibody recognizes KEO4 / ERLIN1
Tested Reactivity	Hu
Tested Application	WB
Specificity	Reported variants represent identical protein: NP_006450.2, NP_001094096.1
Host	Goat
Clonality	Polyclonal
Isotype	IgG
Target Name	KEO4 / ERLIN1
Species	Human
Immunogen	C-EALEPSGENVIQNKE
Conjugation	Un-conjugated
Alternate Names	KEO4; SPFH1; Erlin-1; Endoplasmic reticulum lipid raft-associated protein 1; Protein KEO4; SPG62; Stomatin-prohibitin-flotillin-HflC/K domain-containing protein 1; SPFH domain-containing protein 1; KEO4; C10orf69

### Application Instructions

Application table	Application	Dilution
	WB	0.3 - 1 µg/ml
Application Note	WB: Recommend incubate at RT for 1h. * The dilutions indicate recommended starting dilutions and the optimal dilutions or concentrations should be determined by the scientist.	

### Properties

Form	Liquid
Purification	Purified from goat serum by ammonium sulphate precipitation followed by antigen affinity chromatography using the immunizing peptide.
Buffer	Tris saline (pH 7.3), 0.02% Sodium azide and 0.5% BSA
Preservative	0.02% Sodium azide
Stabilizer	0.5% BSA
Concentration	0.5 mg/ml
Storage instruction	For continuous use, store undiluted antibody at 2-8°C for up to a week. For long-term storage, aliquot and store at -20°C or below. Storage in frost free freezers is not recommended. Avoid repeated freeze/thaw cycles. Suggest spin the vial prior to opening. The antibody solution should be gently mixed before use.

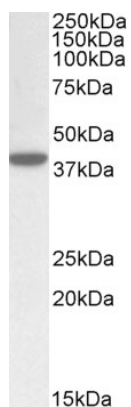
Note For laboratory research only, not for drug, diagnostic or other use.

## Bioinformation

---

Database links	<a href="#">GeneID: 10613 Human</a> <a href="#">Swiss-port # O75477 Human</a>
Gene Symbol	ERLIN1
Gene Full Name	ER lipid raft associated 1
Function	Component of the ERLIN1/ERLIN2 complex which mediates the endoplasmic reticulum-associated degradation (ERAD) of inositol 1,4,5-trisphosphate receptors (IP3Rs). [UniProt]
Research Area	Controls and Markers antibody
Calculated Mw	39 kDa

## Images



ARG64956 anti-KEO4 / ERLIN1 antibody WB image

Western Blot: Human Placenta lysate (35 µg protein in RIPA buffer) stained with ARG64956 anti-KEO4 / ERLIN1 antibody at 0.5 µg/ml dilution.