

## ARG64914 anti-CPT1C antibody

Package: 100 µg  
Store at: -20°C

### Summary

|                     |  |
|---------------------|--|
| Product Description | Goat Polyclonal antibody recognizes CPT1C  |
| Tested Reactivity   | Hu   |
| Predict Reactivity  | Ms, Rat, Cow, Dog, Pig   |
| Tested Application  | IHC-P, WB  |
| Specificity         | This antibody is expected to recognise both reported isoforms (NP_689572.1; NP_001129524.1). Reported variants represent identical protein (NP_001186681.1; NP_001186682.1; NP_689572.1).                |
| Host                | Goat   |
| Clonality           | Polyclonal   |
| Isotype             | IgG  |
| Target Name         | CPT1C  |
| Immunogen           | C-KSSTKTDSHRLGQH   |
| Conjugation         | Un-conjugated  |
| Alternate Names     | CPT IC; Carnitine O-palmitoyltransferase 1, brain isoform; Carnitine O-palmitoyltransferase I, brain isoform; CATL1; CPT1P; CPTI-B; Carnitine palmitoyltransferase 1C; CPTIC; SPG73; EC 2.3.1.21; CPT1-B |

### Application Instructions

| Application table | Application  | Dilution    |
|-------------------|--|-------------|
|                   | IHC-P  | 3 - 5 µg/ml |
|                   | WB   | 1 - 3 µg/ml |
| Application Note  | WB: Recommend incubate at RT for 1h.<br>IHC-P: Antigen Retrieval: Steam tissue section in Citrate buffer (pH 6.0).<br>* The dilutions indicate recommended starting dilutions and the optimal dilutions or concentrations should be determined by the scientist. |             |

### Properties

|                     |   |
|---------------------|---|
| Form                | Liquid  |
| Purification        | Purified from goat serum by ammonium sulphate precipitation followed by antigen affinity chromatography using the immunizing peptide. |
| Buffer              | Tris saline (pH 7.3), 0.02% Sodium azide and 0.5% BSA   |
| Preservative        | 0.02% Sodium azide  |
| Stabilizer          | 0.5% BSA  |
| Concentration       | 0.5 mg/ml   |
| Storage instruction | For continuous use, store undiluted antibody at 2-8°C for up to a week. For long-term storage, aliquot                                |

and store at -20°C or below. Storage in frost free freezers is not recommended. Avoid repeated freeze/thaw cycles. Suggest spin the vial prior to opening. The antibody solution should be gently mixed before use.

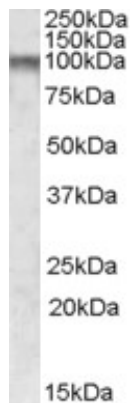
**Note** For laboratory research only, not for drug, diagnostic or other use.

## Bioinformation

---

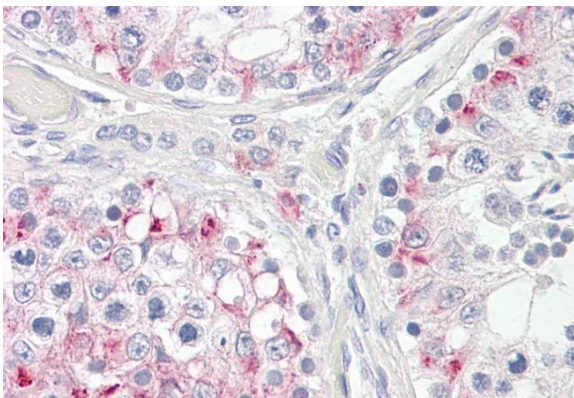
|                |  |
|----------------|--|
| Database links | <a href="#">GeneID: 126129 Human</a><br><a href="#">Swiss-port # Q8TCG5 Human</a>  |
| Background     | This gene encodes a member of the carnitine/choline acetyltransferase family. The encoded protein regulates the beta-oxidation and transport of long-chain fatty acids into mitochondria, and may play a role in the regulation of feeding behavior and whole-body energy homeostasis. Alternatively spliced transcript variants encoding multiple protein isoforms have been observed for this gene. [provided by RefSeq, Dec 2010] |
| Research Area  | Cell Biology and Cellular Response antibody; Metabolism antibody; Neuroscience antibody; Signaling Transduction antibody   |
| Calculated Mw  | 91 kDa   |

## Images



ARG64914 anti-CPT1C antibody WB image

Western Blot: Human Frontal Cortex lysate (35 µg protein in RIPA buffer) stained with ARG64914 anti-CPT1C antibody at 1 µg/ml dilution.



ARG64914 anti-CPT1C antibody IHC-P image

Immunohistochemistry: Paraffin-embedded Human testis tissue. Antigen Retrieval: Steam tissue section in Citrate buffer (pH 6.0). The tissue section was stained with ARG64914 anti-CPT1C antibody at 3.75 µg/ml dilution followed by AP-staining.