

## ARG64892 anti-FEM1A / APRAP antibody

Package: 100 µg  
Store at: -20°C

### Summary

|                     |  |
|---------------------|--|
| Product Description | Goat Polyclonal antibody recognizes FEM1A / APRAP  |
| Tested Reactivity   | Hu   |
| Predict Reactivity  | Cow, Dog   |
| Tested Application  | WB   |
| Host                | Goat   |
| Clonality           | Polyclonal   |
| Isotype             | IgG  |
| Target Name         | FEM1A / APRAP  |
| Species             | Human  |
| Immunogen           | C-GFIPEDLEAFIELH   |
| Conjugation         | Un-conjugated  |
| Alternate Names     | EPRAP; Protein fem-1 homolog A; Prostaglandin E receptor 4-associated protein; FEM1-alpha; FEM1a |

### Application Instructions

| Application table | Application  | Dilution    |
|-------------------|--|-------------|
|                   | WB   | 1 - 3 µg/ml |
| Application Note  | WB: Recommend incubate at RT for 1h.<br>* The dilutions indicate recommended starting dilutions and the optimal dilutions or concentrations should be determined by the scientist. |             |

### Properties

|                     |  |
|---------------------|--|
| Form                | Liquid   |
| Purification        | Purified from goat serum by ammonium sulphate precipitation followed by antigen affinity chromatography using the immunizing peptide.  |
| Buffer              | Tris saline (pH 7.3), 0.02% Sodium azide and 0.5% BSA  |
| Preservative        | 0.02% Sodium azide   |
| Stabilizer          | 0.5% BSA   |
| Concentration       | 0.5 mg/ml  |
| Storage instruction | For continuous use, store undiluted antibody at 2-8°C for up to a week. For long-term storage, aliquot and store at -20°C or below. Storage in frost free freezers is not recommended. Avoid repeated freeze/thaw cycles. Suggest spin the vial prior to opening. The antibody solution should be gently mixed before use. |
| Note                | For laboratory research only, not for drug, diagnostic or other use.   |

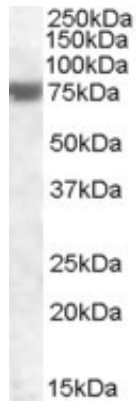
## Bioinformation

---

|                |  |
|----------------|--|
| Database links | <a href="#">GeneID: 55527 Human</a><br><a href="#">Swiss-port # Q9BSK4 Human</a>   |
| Gene Symbol    | FEM1A  |
| Gene Full Name | fem-1 homolog a (C. elegans)   |
| Function       | Probable component of an E3 ubiquitin-protein ligase complex, in which it may act as a substrate recognition subunit (By similarity). May participate in antiinflammatory signaling via its interaction with PTGER4. [UniProt] |
| Research Area  | Cell Biology and Cellular Response antibody; Cell Death antibody   |
| Calculated Mw  | 74 kDa   |

## Images

---



ARG64892 anti-FEM1A / APRAP antibody WB image

Western Blot: Human Heart lysate (35 µg protein in RIPA buffer) stained with ARG64892 anti-FEM1A / APRAP antibody at 1 µg/ml dilution.