

ARG64883 anti-RBM3 antibody

Package: 100 µg
Store at: -20°C

Summary

Product Description	Goat Polyclonal antibody recognizes RBM3
Tested Reactivity	Hu
Predict Reactivity	Ms, Rat, Dog
Tested Application	WB
Host	Goat
Clonality	Polyclonal
Isotype	IgG
Target Name	RBM3
Species	Human
Immunogen	C-DRYSGGNYRDNYDN
Conjugation	Un-conjugated
Alternate Names	RNPL; IS1-RNPL; RNA-binding motif protein 3; RNA-binding protein 3

Application Instructions

Application table	Application	Dilution
	WB	0.01 - 0.03 µg/ml
Application Note	WB: Recommend incubate at RT for 1h. * The dilutions indicate recommended starting dilutions and the optimal dilutions or concentrations should be determined by the scientist.	

Properties

Form	Liquid
Purification	Purified from goat serum by ammonium sulphate precipitation followed by antigen affinity chromatography using the immunizing peptide.
Buffer	Tris saline (pH 7.3), 0.02% Sodium azide and 0.5% BSA
Preservative	0.02% Sodium azide
Stabilizer	0.5% BSA
Concentration	0.5 mg/ml
Storage instruction	For continuous use, store undiluted antibody at 2-8°C for up to a week. For long-term storage, aliquot and store at -20°C or below. Storage in frost free freezers is not recommended. Avoid repeated freeze/thaw cycles. Suggest spin the vial prior to opening. The antibody solution should be gently mixed before use.
Note	For laboratory research only, not for drug, diagnostic or other use.

Bioinformation

Database links

[GeneID: 5935 Human](#)

[Swiss-port # P98179 Human](#)

Background

This gene is a member of the glycine-rich RNA-binding protein family and encodes a protein with one RNA recognition motif (RRM) domain. Expression of this gene is induced by cold shock and low oxygen tension. A pseudogene exists on chromosome 1. Multiple alternatively spliced transcript variants that are predicted to encode different isoforms have been characterized although some of these variants fit nonsense-mediated decay (NMD) criteria. [provided by RefSeq, Jul 2008]

Research Area

Cancer antibody; Gene Regulation antibody; Metabolism antibody

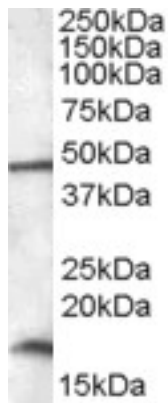
Calculated Mw

17 kDa

PTM

Arg-105 is dimethylated, probably to asymmetric dimethylarginine.
Phosphorylated.

Images



ARG64883 anti-RBM3 antibody WB image

Western Blot: HepG2 lysate (35 µg protein in RIPA buffer) stained with ARG64883 anti-RBM3 antibody at 0.01 µg/ml dilution.