

## ARG64845 anti-NDEL1 antibody

Package: 100 µg  
Store at: -20°C

### Summary

Product Description	Goat Polyclonal antibody recognizes NDEL1
Tested Reactivity	Hu
Predict Reactivity	Ms, Rat, Cow, Dog, Pig
Tested Application	WB
Specificity	This antibody is expected to recognize both reported isoforms (NP_001020750.1; NP_110435.1).
Host	Goat
Clonality	Polyclonal
Isotype	IgG
Target Name	NDEL1
Species	Human
Immunogen	CRNFAKDQASRKS
Conjugation	Un-conjugated
Alternate Names	NUDEL; Protein Nudel; MITAP1; EOPA; Nuclear distribution protein nudE-like 1; NDE2; Mitosis-associated protein 1; NDE1L1

### Application Instructions

Application table	Application	Dilution
	WB	0.1 - 0.3 µg/ml
Application Note	WB: Recommend incubate at RT for 1h. * The dilutions indicate recommended starting dilutions and the optimal dilutions or concentrations should be determined by the scientist.	

### Properties

Form	Liquid
Purification	Purified from goat serum by ammonium sulphate precipitation followed by antigen affinity chromatography using the immunizing peptide.
Buffer	Tris saline (pH 7.3), 0.02% Sodium azide and 0.5% BSA
Preservative	0.02% Sodium azide
Stabilizer	0.5% BSA
Concentration	0.5 mg/ml
Storage instruction	For continuous use, store undiluted antibody at 2-8°C for up to a week. For long-term storage, aliquot and store at -20°C or below. Storage in frost free freezers is not recommended. Avoid repeated freeze/thaw cycles. Suggest spin the vial prior to opening. The antibody solution should be gently mixed

before use.

Note

For laboratory research only, not for drug, diagnostic or other use.

## Bioinformation

---

Database links

[GeneID: 81565 Human](#)

[Swiss-port # Q9GZM8 Human](#)

Background

This gene encodes a coiled-coil protein that plays a role in multiple processes including cytoskeletal organization, cell signaling and neuron migration, outgrowth and maintenance. Alternatively spliced transcript variants encoding multiple isoforms have been observed for this gene, and a pseudogene of this gene is located on the long arm of chromosome X. [provided by RefSeq, Mar 2012]

Research Area

Cell Biology and Cellular Response antibody; Neuroscience antibody

Calculated Mw

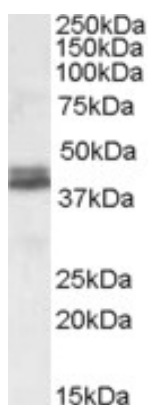
38 kDa

PTM

Phosphorylated in mitosis. Can be phosphorylated by CDK1, CDK5 and MAPK1. Phosphorylation by CDK5 promotes interaction with KATNA1 and YWHAE. Palmitoylation at Cys-273 reduces affinity for dynein.

## Images

---



ARG64845 anti-NDEL1 antibody WB image

Western Blot: Human Cerebellum lysate (35 µg protein in RIPA buffer) stained with ARG64845 anti-NDEL1 antibody at 0.1 µg/ml dilution.