

## ARG64785 anti-APOL6 antibody

Package: 100 µg  
Store at: -20°C

### Summary

Product Description	Goat Polyclonal antibody recognizes APOL6
Tested Reactivity	Hu
Tested Application	IHC-P, WB
Host	Goat
Clonality	Polyclonal
Isotype	IgG
Target Name	APOL6
Species	Human
Immunogen	QRDEDDAPLCEd
Conjugation	Un-conjugated
Alternate Names	Apolipoprotein L6; Apolipoprotein L-VI; APOLVI; ApoL-VI; APOL-VI

### Application Instructions

Application table	Application	Dilution
	IHC-P	5 - 10 µg/ml
	WB	1 - 3 µg/ml
Application Note	IHC-P: Antigen Retrieval: Microwaved tissue section in Tris/EDTA buffer (pH 9.0). WB: Recommend incubate at RT for 1h. * The dilutions indicate recommended starting dilutions and the optimal dilutions or concentrations should be determined by the scientist.	

### Properties

Form	Liquid
Purification	Purified from goat serum by ammonium sulphate precipitation followed by antigen affinity chromatography using the immunizing peptide.
Buffer	Tris saline (pH 7.3), 0.02% Sodium azide and 0.5% BSA
Preservative	0.02% Sodium azide
Stabilizer	0.5% BSA
Concentration	0.5 mg/ml
Storage instruction	For continuous use, store undiluted antibody at 2-8°C for up to a week. For long-term storage, aliquot and store at -20°C or below. Storage in frost free freezers is not recommended. Avoid repeated freeze/thaw cycles. Suggest spin the vial prior to opening. The antibody solution should be gently mixed before use.

Note

For laboratory research only, not for drug, diagnostic or other use.

## Bioinformation

---

Database links

[GeneID: 80830 Human](#)

[Swiss-port # Q9BWW8 Human](#)

Background

This gene is a member of the apolipoprotein L gene family. The encoded protein is found in the cytoplasm, where it may affect the movement of lipids or allow the binding of lipids to organelles. [provided by RefSeq, Jul 2008]

Research Area

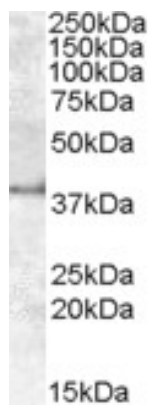
Cell Biology and Cellular Response antibody; Cell Death antibody; Metabolism antibody

Calculated Mw

38 kDa

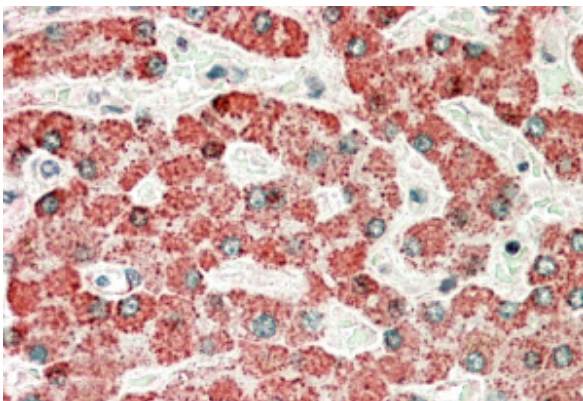
## Images

---



ARG64785 anti-APOL6 antibody WB image

Western blot: Human Kidney lysate (35  $\mu$ g protein in RIPA buffer) stained with ARG64785 anti-APOL6 antibody at 1  $\mu$ g/ml dilution.



ARG64785 anti-APOL6 antibody IHC-P image

Immunohistochemistry: Paraffin embedded Human Liver. (Microwaved antigen retrieval with Tris/EDTA buffer pH9) stained with ARG64785 anti-APOL6 antibody at 5  $\mu$ g/ml dilution followed by HRP-staining.