

ARG64775 anti-CSRP3 antibody

Package: 100 µg
Store at: -20°C

Summary

Product Description	Goat Polyclonal antibody recognizes CSRP3
Tested Reactivity	Hu, Ms, Rat
Predict Reactivity	Cow, Dog
Tested Application	IHC-P, WB
Host	Goat
Clonality	Polyclonal
Isotype	IgG
Target Name	CSRP3
Species	Human
Immunogen	CGKSLESTNVTDKD
Conjugation	Un-conjugated
Alternate Names	CMH12; LIM domain protein, cardiac; Cysteine and glycine-rich protein 3; LMO4; Muscle LIM protein; MLP; CMD1M; CRP3; Cysteine-rich protein 3; Cardiac LIM protein; CLP

Application Instructions

Application table	Application	Dilution
	IHC-P	2.5 µg/ml
	WB	0.01 - 0.03 µg/ml
Application Note	WB: Recommend incubate at RT for 1h. IHC-P: Antigen Retrieval: Steam tissue section in Citrate buffer (pH 6.0). * The dilutions indicate recommended starting dilutions and the optimal dilutions or concentrations should be determined by the scientist.	

Properties

Form	Liquid
Purification	Purified from goat serum by ammonium sulphate precipitation followed by antigen affinity chromatography using the immunizing peptide.
Buffer	Tris saline (pH 7.3), 0.02% Sodium azide and 0.5% BSA
Preservative	0.02% Sodium azide
Stabilizer	0.5% BSA
Concentration	0.5 mg/ml
Storage instruction	For continuous use, store undiluted antibody at 2-8°C for up to a week. For long-term storage, aliquot and store at -20°C or below. Storage in frost free freezers is not recommended. Avoid repeated

freeze/thaw cycles. Suggest spin the vial prior to opening. The antibody solution should be gently mixed before use.

Note

For laboratory research only, not for drug, diagnostic or other use.

Bioinformation

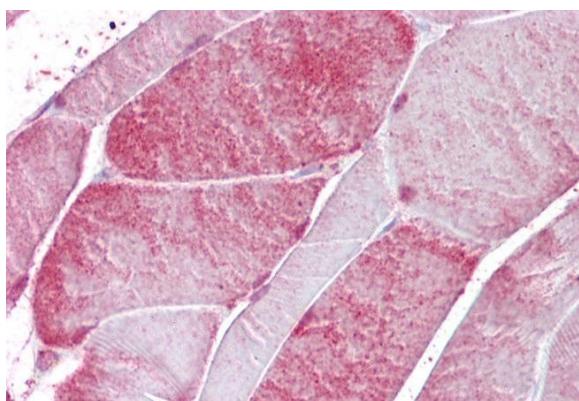
Background

This gene encodes a member of the CSRP family of LIM domain proteins, which may be involved in regulatory processes important for development and cellular differentiation. The LIM/double zinc-finger motif found in this protein is found in a group of proteins with critical functions in gene regulation, cell growth, and somatic differentiation. Mutations in this gene are thought to cause heritable forms of hypertrophic cardiomyopathy (HCM) and dilated cardiomyopathy (DCM) in humans. Alternatively spliced transcript variants with different 5' UTR, but encoding the same protein, have been found for this gene. [provided by RefSeq, Jul 2008]

Research Area
Calculated Mw
PTM

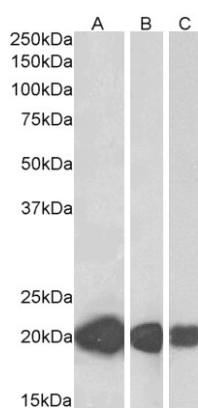
Cell Biology and Cellular Response antibody; Gene Regulation antibody
21 kDa
Phosphorylated by PKC/PRKCA.

Images



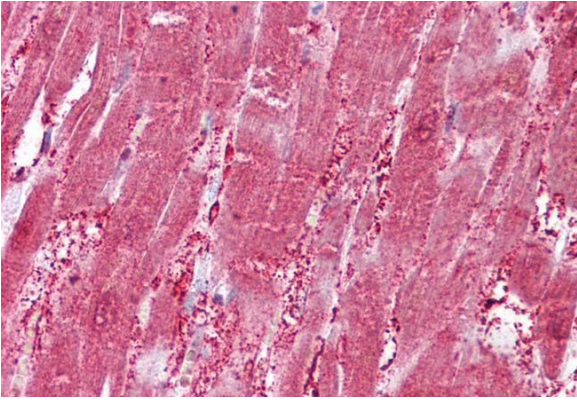
ARG64775 anti-CSRP3 antibody IHC-P image

Immunohistochemistry: Paraffin-embedded Human skeletal muscle tissue. Antigen Retrieval: Steam tissue section in Citrate buffer (pH 6.0). The tissue section was stained with ARG64775 anti-CSRP3 antibody at 2.5 µg/ml dilution followed by AP-staining.



ARG64775 anti-CSRP3 antibody WB image

Western blot: 35 µg of Human (A), Mouse (B) and Rat (C) heart lysates (in RIPA buffer) stained with ARG64775 anti-CSRP3 antibody at 0.01 µg/ml dilution and incubated at RT for 1 hour.



ARG64775 anti-CSRP3 antibody IHC-P image

Immunohistochemistry: Paraffin-embedded Human heart tissue.
Antigen Retrieval: Steam tissue section in Citrate buffer (pH 6.0). The tissue section was stained with ARG64775 anti-CSRP3 antibody at 2.5 µg/ml dilution followed by AP-staining.