

ARG64748
anti-COG1 antibodyPackage: 100 µg
Store at: -20°C

Summary

Product Description	Goat Polyclonal antibody recognizes COG1
Tested Reactivity	Hu
Tested Application	ICC/IF, WB
Host	Goat
Clonality	Polyclonal
Isotype	IgG
Target Name	COG1
Species	Human
Immunogen	C-KAKSTRNIETKAQ
Conjugation	Un-conjugated
Alternate Names	Component of oligomeric Golgi complex 1; COG complex subunit 1; LDLB; CDG2G; Conserved oligomeric Golgi complex subunit 1

Application Instructions

Application table	Application	Dilution
	ICC/IF	Assay-dependent
	WB	0.1 - 0.3 µg/ml

Application Note WB: Recommend incubate at RT for 1h.
* The dilutions indicate recommended starting dilutions and the optimal dilutions or concentrations should be determined by the scientist.

Properties

Form	Liquid
Purification	Purified from goat serum by ammonium sulphate precipitation followed by antigen affinity chromatography using the immunizing peptide.
Buffer	Tris saline (pH 7.3), 0.02% Sodium azide and 0.5% BSA
Preservative	0.02% Sodium azide
Stabilizer	0.5% BSA
Concentration	0.5 mg/ml
Storage instruction	For continuous use, store undiluted antibody at 2-8°C for up to a week. For long-term storage, aliquot and store at -20°C or below. Storage in frost free freezers is not recommended. Avoid repeated freeze/thaw cycles. Suggest spin the vial prior to opening. The antibody solution should be gently mixed before use.

Note

For laboratory research only, not for drug, diagnostic or other use.

Bioinformation

Database links

[GeneID: 9382 Human](#)

[Swiss-port # Q8WTW3 Human](#)

Background

The protein encoded by this gene is one of eight proteins (Cog1-8) which form a Golgi-localized complex (COG) required for normal Golgi morphology and function. It is thought that this protein is required for steps in the normal medial and trans Golgi-associated processing of glycoconjugates and plays a role in the organization of the Golgi-localized complex. [provided by RefSeq, Jul 2008]

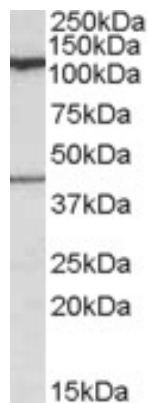
Research Area

Controls and Markers antibody; Signaling Transduction antibody

Calculated Mw

109 kDa

Images

**ARG64748 anti-COG1 antibody WB image**

Western blot: 35 µg of Human cerebellum lysate (in RIPA buffer) stained with ARG64748 anti-COG1 antibody at 0.1 µg/ml dilution and incubated at RT for 1 hour.