

ARG64736
anti-ERP29 antibodyPackage: 100 µg
Store at: -20°C

Summary

Product Description	Goat Polyclonal antibody recognizes ERP29
Tested Reactivity	Hu, Rat
Predict Reactivity	Cow, Dog, Pig
Tested Application	ICC/IF, WB
Specificity	This antibody is expected to recognize isoform 1 (NP_006808.1) only.
Host	Goat
Clonality	Polyclonal
Isotype	IgG
Target Name	ERP29
Species	Human
Immunogen	C-EKNKMSDGKKEELQ
Conjugation	Un-conjugated
Alternate Names	C12orf8; ERp31; PDIA9; ERp28; ERp29; Endoplasmic reticulum resident protein 29; Endoplasmic reticulum resident protein 28; HEL-S-107; PDI-DB; Endoplasmic reticulum resident protein 31

Application Instructions

Application table	Application	Dilution
	ICC/IF	Assay - dependent
	WB	0.1 - 0.3 µg/ml

Application Note WB: Recommend incubate at RT for 1h.
* The dilutions indicate recommended starting dilutions and the optimal dilutions or concentrations should be determined by the scientist.

Properties

Form	Liquid
Purification	Purified from goat serum by ammonium sulphate precipitation followed by antigen affinity chromatography using the immunizing peptide.
Buffer	Tris saline (pH 7.3), 0.02% Sodium azide and 0.5% BSA
Preservative	0.02% Sodium azide
Stabilizer	0.5% BSA
Concentration	0.5 mg/ml
Storage instruction	For continuous use, store undiluted antibody at 2-8°C for up to a week. For long-term storage, aliquot and store at -20°C or below. Storage in frost free freezers is not recommended. Avoid repeated

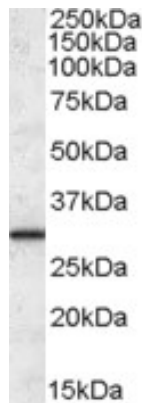
freeze/thaw cycles. Suggest spin the vial prior to opening. The antibody solution should be gently mixed before use.

Note For laboratory research only, not for drug, diagnostic or other use.

Bioinformation

Database links	GeneID: 10961 Human GeneID: 117030 Rat Swiss-port # P30040 Human Swiss-port # P52555 Rat
Background	This gene encodes a reticuloplasmin, a protein which resides in the lumen of the endoplasmic reticulum (ER). The protein shows sequence similarity to the protein disulfide isomerase family. However, it lacks the thioredoxin motif characteristic of this family, suggesting that this protein does not function as a disulfide isomerase. The protein dimerizes and is thought to play a role in the processing of secretory proteins within the ER. Alternative splicing results in multiple transcript variants encoding different isoforms. [provided by RefSeq, Jul 2008]
Research Area	Signaling Transduction antibody
Calculated Mw	29 kDa

Images



ARG64736 anti-ERP29 antibody WB image

Western Blot: Human Liver lysate (35 µg protein in RIPA buffer) stained with ARG64736 anti-ERP29 antibody at 0.1 µg/ml dilution.