

ARG64733 anti-LIPG / Endothelial lipase antibody

Package: 100 µg
Store at: -20°C

Summary

| | |
|---------------------|--|
| Product Description | Goat Polyclonal antibody recognizes LIPG / Endothelial lipase |
| Tested Reactivity | Hu |
| Tested Application | WB |
| Host | Goat |
| Clonality | Polyclonal |
| Isotype | IgG |
| Target Name | LIPG / Endothelial lipase |
| Species | Human |
| Immunogen | C-RFNLRTSKDPEHEG |
| Conjugation | Un-conjugated |
| Alternate Names | PRO719; EL; EDL; Endothelial cell-derived lipase; EC 3.1.1.3; Endothelial lipase |

Application Instructions

| Application table | Application | Dilution |
|-------------------|-------------|---------------|
| | WB | 0.3 - 1 µg/ml |

Application Note WB: Recommend incubate at RT for 1h.
* The dilutions indicate recommended starting dilutions and the optimal dilutions or concentrations should be determined by the scientist.

Properties

| | |
|---------------------|--|
| Form | Liquid |
| Purification | Purified from goat serum by ammonium sulphate precipitation followed by antigen affinity chromatography using the immunizing peptide. |
| Buffer | Tris saline (pH 7.3), 0.02% Sodium azide and 0.5% BSA |
| Preservative | 0.02% Sodium azide |
| Stabilizer | 0.5% BSA |
| Concentration | 0.5 mg/ml |
| Storage instruction | For continuous use, store undiluted antibody at 2-8°C for up to a week. For long-term storage, aliquot and store at -20°C or below. Storage in frost free freezers is not recommended. Avoid repeated freeze/thaw cycles. Suggest spin the vial prior to opening. The antibody solution should be gently mixed before use. |
| Note | For laboratory research only, not for drug, diagnostic or other use. |

Bioinformation

Database links

[GeneID: 9388 Human](#)

[Swiss-port # Q9Y5X9 Human](#)

Background

The protein encoded by this gene has substantial phospholipase activity and may be involved in lipoprotein metabolism and vascular biology. This protein is designated a member of the TG lipase family by its sequence and characteristic lid region which provides substrate specificity for enzymes of the TG lipase family. [provided by RefSeq, Jul 2008]

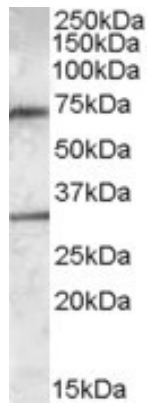
Research Area

Cell Biology and Cellular Response antibody; Metabolism antibody; Signaling Transduction antibody

Calculated Mw

57 kDa

Images



ARG64733 anti-LIPG / Endothelial lipase antibody WB image

Western blot: Human Liver lysate (35 µg protein in RIPA buffer) stained with ARG64733 anti-LIPG / Endothelial lipase antibody at 0.3 µg/ml dilution.