

## ARG64626 anti-CHRNB3 antibody

Package: 100 µg  
Store at: -20°C

### Summary

Product Description	Goat Polyclonal antibody recognizes CHRNB3
Tested Reactivity	Hu
Predict Reactivity	Ms, Rat
Tested Application	WB
Host	Goat
Clonality	Polyclonal
Isotype	IgG
Target Name	CHRNB3
Species	Human
Immunogen	C-SRHVKKEHFISQ
Conjugation	Un-conjugated
Alternate Names	Neuronal acetylcholine receptor subunit beta-3

### Application Instructions

Application table	Application	Dilution
	WB	1 - 3 µg/ml

**Application Note**  
WB: Recommend incubate at RT for 1h.  
\* The dilutions indicate recommended starting dilutions and the optimal dilutions or concentrations should be determined by the scientist.

### Properties

Form	Liquid
Purification	Purified from goat serum by ammonium sulphate precipitation followed by antigen affinity chromatography using the immunizing peptide.
Buffer	Tris saline (pH 7.3), 0.02% Sodium azide and 0.5% BSA
Preservative	0.02% Sodium azide
Stabilizer	0.5% BSA
Concentration	0.5 mg/ml
Storage instruction	For continuous use, store undiluted antibody at 2-8°C for up to a week. For long-term storage, aliquot and store at -20°C or below. Storage in frost free freezers is not recommended. Avoid repeated freeze/thaw cycles. Suggest spin the vial prior to opening. The antibody solution should be gently mixed before use.
Note	For laboratory research only, not for drug, diagnostic or other use.

## Bioinformation

---

### Database links

[GeneID: 1142 Human](#)

[Swiss-port # Q05901 Human](#)

### Background

The nicotinic acetylcholine receptors (nAChRs) are members of a superfamily of ligand-gated ion channels that mediate fast signal transmission at synapses. The nAChRs are (hetero)pentamers composed of homologous subunits. The subunits that make up the muscle and neuronal forms of nAChRs are encoded by separate genes and have different primary structure. There are several subtypes of neuronal nAChRs that vary based on which homologous subunits are arranged around the central channel. They are classified as alpha-subunits if, like muscle alpha-1 (MIM 100690), they have a pair of adjacent cysteines as part of the presumed acetylcholine binding site. Subunits lacking these cysteine residues are classified as beta-subunits (Groot Kormelink and Luyten, 1997 [PubMed 9009220]). Elliott et al. (1996) [PubMed 8906617] stated that the proposed structure for each subunit is a conserved N-terminal extracellular domain followed by 3 conserved transmembrane domains, a variable cytoplasmic loop, a fourth conserved transmembrane domain, and a short C-terminal extracellular region.[supplied by OMIM, Apr 2010]

### Research Area

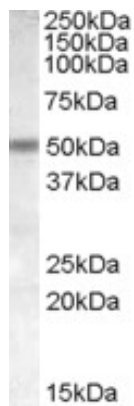
Neuroscience antibody

### Calculated Mw

53 kDa

## Images

---



ARG64626 anti-CHRN3 antibody WB image

Western Blot: Human Cerebellum lysate (35 µg protein in RIPA buffer) stained with ARG64626 anti-CHRN3 antibody at 1 µg/ml dilution.