

ARG64605
anti-Apolipoprotein F antibodyPackage: 100 µg
Store at: -20°C

Summary

| | |
|---------------------|---|
| Product Description | Goat Polyclonal antibody recognizes Apolipoprotein F |
| Tested Reactivity | Hu |
| Tested Application | IHC-P, WB |
| Host | Goat |
| Clonality | Polyclonal |
| Isotype | IgG |
| Target Name | Apolipoprotein F |
| Species | Human |
| Immunogen | C-KSYDLDPGAGSLE |
| Conjugation | Un-conjugated |
| Alternate Names | Apolipoprotein F; Lipid transfer inhibitor protein; Apo-F; LTIP |

Application Instructions

| Application table | Application | Dilution |
|-------------------|--|---------------|
| | IHC-P | 2 - 4 µg/ml |
| | WB | 0.3 - 1 µg/ml |
| Application Note | IHC-P: Antigen Retrieval: Steam tissue section in Citrate buffer (pH 6.0). WB: Recommend incubate at RT for 1h. * The dilutions indicate recommended starting dilutions and the optimal dilutions or concentrations should be determined by the scientist. | |

Properties

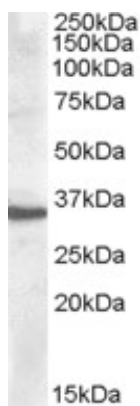
| | |
|---------------------|--|
| Form | Liquid |
| Purification | Purified from goat serum by ammonium sulphate precipitation followed by antigen affinity chromatography using the immunizing peptide. |
| Buffer | Tris saline (pH 7.3), 0.02% Sodium azide and 0.5% BSA |
| Preservative | 0.02% Sodium azide |
| Stabilizer | 0.5% BSA |
| Concentration | 0.5 mg/ml |
| Storage instruction | For continuous use, store undiluted antibody at 2-8°C for up to a week. For long-term storage, aliquot and store at -20°C or below. Storage in frost free freezers is not recommended. Avoid repeated freeze/thaw cycles. Suggest spin the vial prior to opening. The antibody solution should be gently mixed before use. |

Note For laboratory research only, not for drug, diagnostic or other use.

Bioinformation

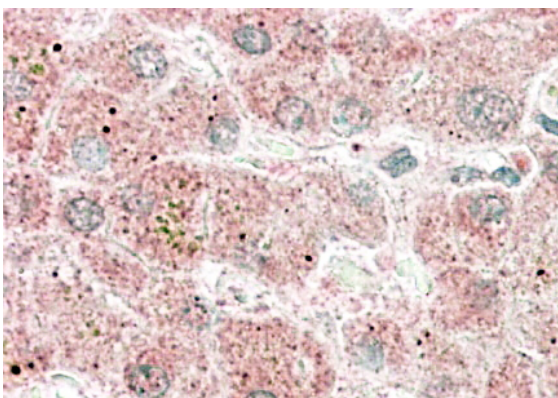
| | |
|----------------|--|
| Database links | GeneID: 319 Human Swiss-port # Q13790 Human |
| Background | The product of this gene is one of the minor apolipoproteins found in plasma. This protein forms complexes with lipoproteins and may be involved in transport and/or esterification of cholesterol. [provided by RefSeq, Jul 2008] |
| Research Area | Cell Biology and Cellular Response antibody; Metabolism antibody; Signaling Transduction antibody |
| Calculated Mw | 35 kDa |
| PTM | O-glycosylated with core 1 or possibly core 8 glycans. |

Images



ARG64605 anti-Apolipoprotein F antibody WB image

Western Blot: Human Liver lysate (35 µg protein in RIPA buffer) stained with ARG64605 anti-Apolipoprotein F antibody at 0.5 µg/ml dilution.



ARG64605 anti-Apolipoprotein F antibody IHC-P image

Immunohistochemistry: paraffin embedded Human Liver. (Steamed antigen retrieval with citrate buffer pH 6) stained with ARG64605 anti-Apolipoprotein F antibody at 3.8 µg/ml dilution followed by AP-staining.