

ARG64597 anti-OTUB2 antibody

Package: 100 µg
Store at: -20°C

Summary

Product Description	Goat Polyclonal antibody recognizes OTUB2
Tested Reactivity	Hu
Predict Reactivity	Ms, Rat, Cow
Tested Application	WB
Host	Goat
Clonality	Polyclonal
Isotype	IgG
Target Name	OTUB2
Species	Human
Immunogen	C-YKTSHYNILYAADKH
Conjugation	Un-conjugated
Alternate Names	Ubiquitin-specific-processing protease OTUB2; Deubiquitinating enzyme OTUB2; C14orf137; OTU2; OTB2; Otubain-2; EC 3.4.19.12; OTU domain-containing ubiquitin aldehyde-binding protein 2; Ubiquitin thioesterase OTUB2

Application Instructions

Application table	Application	Dilution
	WB	1 - 3 µg/ml
Application Note	WB: Recommend incubate at RT for 1h. * The dilutions indicate recommended starting dilutions and the optimal dilutions or concentrations should be determined by the scientist.	

Properties

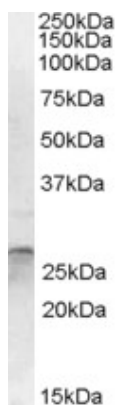
Form	Liquid
Purification	Purified from goat serum by ammonium sulphate precipitation followed by antigen affinity chromatography using the immunizing peptide.
Buffer	Tris saline (pH 7.3), 0.02% Sodium azide and 0.5% BSA
Preservative	0.02% Sodium azide
Stabilizer	0.5% BSA
Concentration	0.5 mg/ml
Storage instruction	For continuous use, store undiluted antibody at 2-8°C for up to a week. For long-term storage, aliquot and store at -20°C or below. Storage in frost free freezers is not recommended. Avoid repeated freeze/thaw cycles. Suggest spin the vial prior to opening. The antibody solution should be gently mixed before use.

Note For laboratory research only, not for drug, diagnostic or other use.

Bioinformation

Database links	GeneID: 78990 Human Swiss-port # Q96DC9 Human
Background	This gene encodes one of several deubiquitylating enzymes. Ubiquitin modification of proteins is needed for their stability and function; to reverse the process, deubiquityling enzymes remove ubiquitin. This protein contains an OTU domain and binds Ubal (ubiquitin aldehyde); an active cysteine protease site is present in the OTU domain. [provided by RefSeq, Aug 2011]
Research Area	Cancer antibody; Cell Biology and Cellular Response antibody; Gene Regulation antibody
Calculated Mw	27 kDa

Images



ARG64597 anti-OTUB2 antibody WB image

Western Blot: Human Cerebellum lysate (35 µg protein in RIPA buffer) stained with ARG64597 anti-OTUB2 antibody at 1 µg/ml dilution.