

ARG64568 anti-PRUNE2 / BMCC1 antibody

Package: 100 µg
Store at: -20°C

Summary

Product Description	Goat Polyclonal antibody recognizes PRUNE2 / BMCC1
Tested Reactivity	Hu
Predict Reactivity	Dog
Tested Application	WB
Host	Goat
Clonality	Polyclonal
Isotype	IgG
Target Name	PRUNE2 / BMCC1
Species	Human
Immunogen	C-MESEKISEKQEE
Conjugation	Un-conjugated
Alternate Names	KIAA0367; Protein prune homolog 2; C9orf65; BNIPXL; BMCC1; BNIP2 motif-containing molecule at the C-terminal region 1

Application Instructions

Application table	Application	Dilution
	WB	1 - 3 µg/ml

Application Note
WB: Recommend incubate at RT for 1h.
* The dilutions indicate recommended starting dilutions and the optimal dilutions or concentrations should be determined by the scientist.

Properties

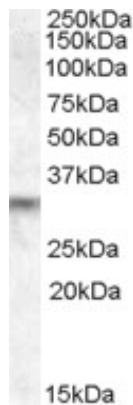
Form	Liquid
Purification	Purified from goat serum by ammonium sulphate precipitation followed by antigen affinity chromatography using the immunizing peptide.
Buffer	Tris saline (pH 7.3), 0.02% Sodium azide and 0.5% BSA
Preservative	0.02% Sodium azide
Stabilizer	0.5% BSA
Concentration	0.5 mg/ml
Storage instruction	For continuous use, store undiluted antibody at 2-8°C for up to a week. For long-term storage, aliquot and store at -20°C or below. Storage in frost free freezers is not recommended. Avoid repeated freeze/thaw cycles. Suggest spin the vial prior to opening. The antibody solution should be gently mixed before use.

Note For laboratory research only, not for drug, diagnostic or other use.

Bioinformation

Database links	GeneID: 158471 Human Swiss-port # Q8WUY3 Human
Gene Symbol	PRUNE2
Gene Full Name	prune homolog 2 (Drosophila)
Background	The protein encoded by this gene belongs to the B-cell CLL/lymphoma 2 and adenovirus E1B 19 kDa interacting family, whose members play roles in many cellular processes including apoptosis, cell transformation, and synaptic function. Several functions for this protein have been demonstrated including suppression of Ras homolog family member A activity, which results in reduced stress fiber formation and suppression of oncogenic cellular transformation. A high molecular weight isoform of this protein has also been shown to colocalize with Adaptor protein complex 2, beta-Adaptin and endodermal markers, suggesting an involvement in post-endocytic trafficking. In prostate cancer cells, this gene acts as a tumor suppressor and its expression is regulated by prostate cancer antigen 3, a non-protein coding gene on the opposite DNA strand in an intron of this gene. Prostate cancer antigen 3 regulates levels of this gene through formation of a double-stranded RNA that undergoes adenosine deaminase actin on RNA-dependent adenosine-to-inosine RNA editing. Alternative splicing results in multiple transcript variants. [provided by RefSeq, Jul 2015]
Function	May play an important role in regulating differentiation, survival and aggressiveness of the tumor cells. [UniProt]
Research Area	Cell Biology and Cellular Response antibody; Cell Death antibody
Calculated Mw	341 kDa

Images



ARG64568 anti-PRUNE2 / BMCC1 antibody WB image

Western Blot: Human Brain lysate (35 μ g protein in RIPA buffer) stained with ARG64568 anti-PRUNE2 / BMCC1 antibody at 1 μ g/ml dilution.