

ARG64566 anti-CLEC2 / CLEC1B antibody

Package: 100 µg
Store at: -20°C

Summary

Product Description	Goat Polyclonal antibody recognizes CLEC2 / CLEC1B
Tested Reactivity	Hu
Tested Application	WB
Specificity	This antibody is expected to recognize both reported isoforms (NP_001092901.1; NP_057593.3)
Host	Goat
Clonality	Polyclonal
Isotype	IgG
Target Name	CLEC2 / CLEC1B
Species	Human
Immunogen	KGHKCSPCDTNWRY
Conjugation	Un-conjugated
Alternate Names	CLEC2; C-type lectin domain family 1 member B; CLEC2B; PRO1384; C-type lectin-like receptor 2; CLEC-2; 1810061I13Rik; QDED721

Application Instructions

Application table	Application	Dilution
	WB	1 - 3 µg/ml

Application Note
WB: Recommend incubate at RT for 1h.
* The dilutions indicate recommended starting dilutions and the optimal dilutions or concentrations should be determined by the scientist.

Properties

Form	Liquid
Purification	Purified from goat serum by ammonium sulphate precipitation followed by antigen affinity chromatography using the immunizing peptide.
Buffer	Tris saline (pH 7.3), 0.02% Sodium azide and 0.5% BSA
Preservative	0.02% Sodium azide
Stabilizer	0.5% BSA
Concentration	0.5 mg/ml
Storage instruction	For continuous use, store undiluted antibody at 2-8°C for up to a week. For long-term storage, aliquot and store at -20°C or below. Storage in frost free freezers is not recommended. Avoid repeated freeze/thaw cycles. Suggest spin the vial prior to opening. The antibody solution should be gently mixed before use.

Note For laboratory research only, not for drug, diagnostic or other use.

Bioinformation

Database links [GeneID: 51266 Human](#)

[Swiss-port # Q9P126 Human](#)

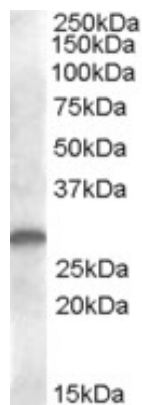
Background Natural killer (NK) cells express multiple calcium-dependent (C-type) lectin-like receptors, such as CD94 (KLRD1; MIM 602894) and NKG2D (KLRC4; MIM 602893), that interact with major histocompatibility complex class I molecules and either inhibit or activate cytotoxicity and cytokine secretion. CLEC2 is a C-type lectin-like receptor expressed in myeloid cells and NK cells (Colonna et al., 2000 [PubMed 10671229]).[supplied by OMIM, Jan 2011]

Research Area Immune System antibody

Calculated Mw 27 kDa

PTM Glycosylated.
Phosphorylated on tyrosine residue in response to rhodocytin binding.

Images



ARG64566 anti-CLEC2 / CLEC1B antibody WB image

Western Blot: human kidney lysate (35 µg protein in RIPA buffer) stained with ARG64566 anti-CLEC2 / CLEC1B antibody at 1 µg/ml dilution.