

## ARG64551 anti-CHRNB1 / ACHRB antibody

Package: 100 µg  
Store at: -20°C

### Summary

Product Description	Goat Polyclonal antibody recognizes CHRNB1 / ACHRB
Tested Reactivity	Hu
Predict Reactivity	Ms, Rat, Cow
Tested Application	WB
Host	Goat
Clonality	Polyclonal
Isotype	IgG
Target Name	CHRNB1 / ACHRB
Species	Human
Immunogen	C-QEQEDHDALKED
Conjugation	Un-conjugated
Alternate Names	CMS1D; SCCMS; CMS2A; CMS2C; Acetylcholine receptor subunit beta; CHRNB; ACHRB

### Application Instructions

Application table	Application	Dilution
	WB	1 - 3 µg/ml
Application Note	WB: Recommend incubate at RT for 1h. * The dilutions indicate recommended starting dilutions and the optimal dilutions or concentrations should be determined by the scientist.	

### Properties

Form	Liquid
Purification	Purified from goat serum by ammonium sulphate precipitation followed by antigen affinity chromatography using the immunizing peptide.
Buffer	Tris saline (pH 7.3), 0.02% Sodium azide and 0.5% BSA
Preservative	0.02% Sodium azide
Stabilizer	0.5% BSA
Concentration	0.5 mg/ml
Storage instruction	For continuous use, store undiluted antibody at 2-8°C for up to a week. For long-term storage, aliquot and store at -20°C or below. Storage in frost free freezers is not recommended. Avoid repeated freeze/thaw cycles. Suggest spin the vial prior to opening. The antibody solution should be gently mixed before use.
Note	For laboratory research only, not for drug, diagnostic or other use.

## Bioinformation

---

### Database links

[GeneID: 1140 Human](#)

[Swiss-port # P11230 Human](#)

### Background

The muscle acetylcholine receptor is composed of five subunits: two alpha subunits and one beta, one gamma, and one delta subunit. This gene encodes the beta subunit of the acetylcholine receptor. The acetylcholine receptor changes conformation upon acetylcholine binding leading to the opening of an ion-conducting channel across the plasma membrane. Mutations in this gene are associated with slow-channel congenital myasthenic syndrome. [provided by RefSeq, Jul 2008]

### Research Area

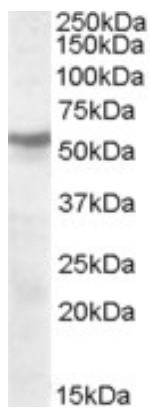
Neuroscience antibody

### Calculated Mw

57 kDa

## Images

---



### ARG64551 anti-CHRN1 / ACHRB antibody WB image

Western Blot: human cerebellum lysate (35 µg protein in RIPA buffer) stained with ARG64551 anti-CHRN1 / ACHRB antibody at 1 µg/ml dilution.