

## ARG64537 anti-TXL2 / TXNDC6 antibody

Package: 100 µg  
Store at: -20°C

### Summary

Product Description	Goat Polyclonal antibody recognizes TXL2 / TXNDC6
Tested Reactivity	Hu
Tested Application	WB
Host	Goat
Clonality	Polyclonal
Isotype	IgG
Target Name	TXL2 / TXNDC6
Species	Human
Immunogen	C-ESSTQPRLKITDLD
Conjugation	Un-conjugated
Alternate Names	Thioredoxin domain-containing protein 6; NM23-H9; Txl-2; Thioredoxin-like protein 2; TXL-2; TXL2; TXNDC6

### Application Instructions

Application table	Application	Dilution
	WB	1 - 3 µg/ml
Application Note	WB: Recommend incubate at RT for 1h. * The dilutions indicate recommended starting dilutions and the optimal dilutions or concentrations should be determined by the scientist.	

### Properties

Form	Liquid
Purification	Purified from goat serum by ammonium sulphate precipitation followed by antigen affinity chromatography using the immunizing peptide.
Buffer	Tris saline (pH 7.3), 0.02% Sodium azide and 0.5% BSA
Preservative	0.02% Sodium azide
Stabilizer	0.5% BSA
Concentration	0.5 mg/ml
Storage instruction	For continuous use, store undiluted antibody at 2-8°C for up to a week. For long-term storage, aliquot and store at -20°C or below. Storage in frost free freezers is not recommended. Avoid repeated freeze/thaw cycles. Suggest spin the vial prior to opening. The antibody solution should be gently mixed before use.
Note	For laboratory research only, not for drug, diagnostic or other use.

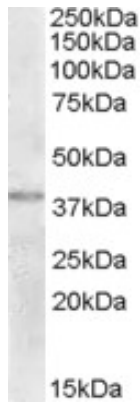
## Bioinformation

---

Database links	<a href="#">GeneID: 347736 Human</a> <a href="#">Swiss-port # Q86XW9 Human</a>
Gene Symbol	NME9
Gene Full Name	NME/NM23 family member 9
Function	May be a regulator of microtubule physiology. [UniProt]
Research Area	Cell Biology and Cellular Response antibody
Calculated Mw	37 kDa

## Images

---



ARG64537 anti-TXL2 / TXNDC6 antibody WB image

Western Blot: Human Uterus lysate (35 µg protein in RIPA buffer) stained with ARG64537 anti-TXL2 / TXNDC6 antibody at 2 µg/ml dilution.