

## ARG64492 anti-PNPLA2 / ATGL antibody

Package: 100 µg  
Store at: -20°C

### Summary

Product Description	Goat Polyclonal antibody recognizes PNPLA2 / ATGL
Tested Reactivity	Hu
Tested Application	WB
Host	Goat
Clonality	Polyclonal
Isotype	IgG
Target Name	PNPLA2 / ATGL
Species	Human
Immunogen	C-PARPHGPEDKDQ
Conjugation	Un-conjugated
Alternate Names	Transport-secretion protein 2; Pigment epithelium-derived factor; TTS2.2; FP17548; 1110001C14Rik; TTS2; PEDF-R; IPLA2-zeta; ATGL; Calcium-independent phospholipase A2; TTS-2.2; Patatin-like phospholipase domain-containing protein 2; iPLA2zeta; Desnutrin; Adipose triglyceride lipase; EC 3.1.1.3

### Application Instructions

Application table	Application	Dilution
	WB	0.2 - 0.6 µg/ml
Application Note	WB: Recommend incubate at RT for 1h. * The dilutions indicate recommended starting dilutions and the optimal dilutions or concentrations should be determined by the scientist.	

### Properties

Form	Liquid
Purification	Purified from goat serum by ammonium sulphate precipitation followed by antigen affinity chromatography using the immunizing peptide.
Buffer	Tris saline (pH 7.3), 0.02% Sodium azide and 0.5% BSA
Preservative	0.02% Sodium azide
Stabilizer	0.5% BSA
Concentration	0.5 mg/ml
Storage instruction	For continuous use, store undiluted antibody at 2-8°C for up to a week. For long-term storage, aliquot and store at -20°C or below. Storage in frost free freezers is not recommended. Avoid repeated freeze/thaw cycles. Suggest spin the vial prior to opening. The antibody solution should be gently mixed before use.

Note For laboratory research only, not for drug, diagnostic or other use.

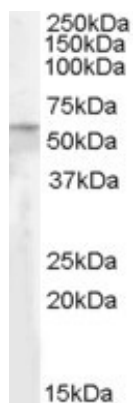
## Bioinformation

---

Database links	<a href="#">GeneID: 57104 Human</a> <a href="#">Swiss-port # Q96AD5 Human</a>
Background	This gene encodes an enzyme which catalyzes the first step in the hydrolysis of triglycerides in adipose tissue. Mutations in this gene are associated with neutral lipid storage disease with myopathy. [provided by RefSeq, Jul 2010]
Research Area	Cell Biology and Cellular Response antibody; Metabolism antibody; Signaling Transduction antibody
Calculated Mw	55 kDa
PTM	Phosphorylation at Ser-404 by PKA is increased during fasting and moderate intensity exercise, and moderately increases lipolytic activity (By similarity). Phosphorylation at Ser-404 is increased upon beta-adrenergic stimulation.

## Images

---



ARG64492 anti-PNPLA2 / ATGL antibody WB image

Western Blot: Human Adipose lysate (35  $\mu$ g protein in RIPA buffer) stained with ARG64492 anti-PNPLA2 / ATGL antibody at 0.2  $\mu$ g/ml dilution.