

## ARG64485 anti-LYPLAL1 antibody

Package: 100 µg  
Store at: -20°C

### Summary

Product Description	Goat Polyclonal antibody recognizes LYPLAL1
Tested Reactivity	Hu
Tested Application	WB
Host	Goat
Clonality	Polyclonal
Isotype	IgG
Target Name	LYPLAL1
Species	Human
Immunogen	DRFKITNDCPEHLE
Conjugation	Un-conjugated
Alternate Names	Q96AV0; Lysophospholipase-like protein 1; EC 3.1.2.-

### Application Instructions

Application table	Application	Dilution
	WB	0.3 - 1 µg/ml

**Application Note** WB: Recommend incubate at RT for 1h.  
\* The dilutions indicate recommended starting dilutions and the optimal dilutions or concentrations should be determined by the scientist.

### Properties

Form	Liquid
Purification	Purified from goat serum by ammonium sulphate precipitation followed by antigen affinity chromatography using the immunizing peptide.
Buffer	Tris saline (pH 7.3), 0.02% Sodium azide and 0.5% BSA
Preservative	0.02% Sodium azide
Stabilizer	0.5% BSA
Concentration	0.5 mg/ml
Storage instruction	For continuous use, store undiluted antibody at 2-8°C for up to a week. For long-term storage, aliquot and store at -20°C or below. Storage in frost free freezers is not recommended. Avoid repeated freeze/thaw cycles. Suggest spin the vial prior to opening. The antibody solution should be gently mixed before use.
Note	For laboratory research only, not for drug, diagnostic or other use.

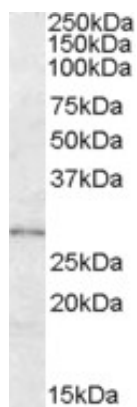
## Bioinformation

---

Database links	<a href="#">GeneID: 127018 Human</a> <a href="#">Swiss-port # Q5VWZ2 Human</a>
Gene Symbol	LYPLAL1
Gene Full Name	lysophospholipase-like 1
Function	Has depalmitoylating activity toward KCNMA1. Does not exhibit phospholipase nor triacylglycerol lipase activity, able to hydrolyze only short chain substrates due to its shallow active site. [UniProt]
Research Area	Metabolism antibody; Signaling Transduction antibody
Calculated Mw	26 kDa

## Images

---



ARG64485 anti-LYPLAL1 antibody WB image

Western Blot: Human Adipose lysate (35  $\mu$ g protein in RIPA buffer) stained with ARG64485 anti-LYPLAL1 antibody at 0.3  $\mu$ g/ml dilution.