

## ARG64457 anti-COL4A3BP antibody

Package: 100 µg  
Store at: -20°C

### Summary

Product Description	Goat Polyclonal antibody recognizes COL4A3BP
Tested Reactivity	Ms
Predict Reactivity	Hu
Tested Application	WB
Specificity	This antibody is expected to recognise both reported isoforms (NP_005704.1 and NP_112729.1)
Host	Goat
Clonality	Polyclonal
Isotype	IgG
Target Name	COL4A3BP
Species	Human
Immunogen	DHDSAPLNNRC
Conjugation	Un-conjugated
Alternate Names	START domain-containing protein 11; STARD11; Goodpasture antigen-binding protein; StARD11; Ceramide transfer protein; CERTL; StAR-related lipid transfer protein 11; CERT; GPBP; MRD34; Collagen type IV alpha-3-binding protein; hCERT

### Application Instructions

Application table	Application	Dilution
	WB	0.3 - 1 µg/ml

**Application Note** WB: Recommend incubate at RT for 1h.  
\* The dilutions indicate recommended starting dilutions and the optimal dilutions or concentrations should be determined by the scientist.

### Properties

Form	Liquid
Purification	Purified from goat serum by ammonium sulphate precipitation followed by antigen affinity chromatography using the immunizing peptide.
Buffer	Tris saline (pH 7.3), 0.02% Sodium azide and 0.5% BSA
Preservative	0.02% Sodium azide
Stabilizer	0.5% BSA
Concentration	0.5 mg/ml
Storage instruction	For continuous use, store undiluted antibody at 2-8°C for up to a week. For long-term storage, aliquot and store at -20°C or below. Storage in frost free freezers is not recommended. Avoid repeated

freeze/thaw cycles. Suggest spin the vial prior to opening. The antibody solution should be gently mixed before use.

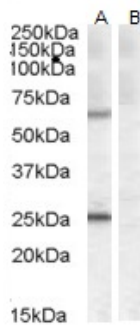
**Note** For laboratory research only, not for drug, diagnostic or other use.

## Bioinformation

---

Database links	<a href="#">GeneID: 68018 Mouse</a> <a href="#">Swiss-port # Q9EQG9 Mouse</a>
Background	This gene encodes a kinase that specifically phosphorylates the N-terminal region of the non-collagenous domain of the alpha 3 chain of type IV collagen, known as the Goodpasture antigen. Goodpasture disease is the result of an autoimmune response directed at this antigen. One isoform of this protein is also involved in ceramide intracellular transport. Three transcript variants encoding different isoforms have been found for this gene. [provided by RefSeq, Jul 2008]
Research Area	Cancer antibody; Cell Biology and Cellular Response antibody; Immune System antibody; Metabolism antibody; Signaling Transduction antibody
Calculated Mw	71 kDa
PTM	Phosphorylation on Ser-132 decreases the affinity toward phosphatidylinositol 4-phosphate at Golgi membranes and reduces ceramide transfer activity. Inactivated by hyperphosphorylation of serine residues by CSNK1G2/CK1 that triggers dissociation from the Golgi complex, thus down-regulating ER-to-Golgi transport of ceramide and sphingomyelin synthesis.

## Images



ARG64457 anti-COL4A3BP antibody WB image

Western blot: 35 µg of Mouse heart lysate (in RIPA buffer) with (B) and without (A) blocking peptide. The blots were stained with ARG64457 anti-COL4A3BP antibody at 0.5 µg/ml dilution and incubated at RT for 1 hour.