

## ARG64435 anti-NPFFR1 antibody

Package: 100 µg  
Store at: -20°C

### Summary

Product Description	Goat Polyclonal antibody recognizes NPFFR1
Tested Reactivity	Hu
Tested Application	WB
Host	Goat
Clonality	Polyclonal
Isotype	IgG
Target Name	NPFFR1
Species	Human
Immunogen	C-RPSGSHKEAYSERP
Conjugation	Un-conjugated
Alternate Names	Neuropeptide FF receptor 1; NPFF1; NPFF1R1; OT7T022; G-protein coupled receptor 147; GPR147; RFamide-related peptide receptor OT7T022

### Application Instructions

Application table	Application	Dilution
	WB	0.03 - 0.1 µg/ml
Application Note	WB: Recommend incubate at RT for 1h. * The dilutions indicate recommended starting dilutions and the optimal dilutions or concentrations should be determined by the scientist.	

### Properties

Form	Liquid
Purification	Purified from goat serum by ammonium sulphate precipitation followed by antigen affinity chromatography using the immunizing peptide.
Buffer	Tris saline (pH 7.3), 0.02% Sodium azide and 0.5% BSA
Preservative	0.02% Sodium azide
Stabilizer	0.5% BSA
Concentration	0.5 mg/ml
Storage instruction	For continuous use, store undiluted antibody at 2-8°C for up to a week. For long-term storage, aliquot and store at -20°C or below. Storage in frost free freezers is not recommended. Avoid repeated freeze/thaw cycles. Suggest spin the vial prior to opening. The antibody solution should be gently mixed before use.
Note	For laboratory research only, not for drug, diagnostic or other use.

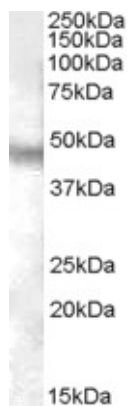
## Bioinformation

---

Database links	<a href="#">GeneID: 64106 Human</a> <a href="#">Swiss-port # Q9GZO6 Human</a>
Gene Symbol	NPFFR1
Gene Full Name	neuropeptide FF receptor 1
Function	Receptor for NPAF (A-18-F-amide) and NPFF (F-8-F-amide) neuropeptides, also known as morphine-modulating peptides. Can also be activated by a variety of naturally occurring or synthetic FMRF-amide like ligands. This receptor mediates its action by association with G proteins that activate a phosphatidylinositol-calcium second messenger system. [UniProt]
Research Area	Neuroscience antibody; Signaling Transduction antibody
Calculated Mw	48 kDa

## Images

---



ARG64435 anti-NPFFR1 antibody WB image

Western Blot: Human Brain (Cerebellum) lysate (35  $\mu$ g protein in RIPA buffer) stained with ARG64435 anti-NPFFR1 antibody at 0.03  $\mu$ g/ml dilution.