

ARG64404 anti-CADM4 antibody

Package: 100 µg
Store at: -20°C

Summary

Product Description	Goat Polyclonal antibody recognizes CADM4
Tested Reactivity	Hu
Predict Reactivity	Ms, Rat, Dog
Tested Application	IHC-P, WB
Host	Goat
Clonality	Polyclonal
Isotype	IgG
Target Name	CADM4
Species	Human
Immunogen	C-REAFLNGSDGHRKE
Conjugation	Un-conjugated
Alternate Names	IGSF4C; NECL4; Cell adhesion molecule 4; IgSF4C; Necl-4; Nectin-like protein 4; TSLC1-like protein 2; Immunoglobulin superfamily member 4C; TSL2; NECL-4; synCAM4

Application Instructions

Application table	Application	Dilution
	IHC-P	2.5 µg/ml
	WB	0.03 - 0.1 µg/ml
Application Note	WB: Recommend incubate at RT for 1h. IHC-P: Antigen Retrieval: Steam tissue section in Citrate buffer (pH 6.0). * The dilutions indicate recommended starting dilutions and the optimal dilutions or concentrations should be determined by the scientist.	

Properties

Form	Liquid
Purification	Purified from goat serum by ammonium sulphate precipitation followed by antigen affinity chromatography using the immunizing peptide.
Buffer	Tris saline (pH 7.3), 0.02% Sodium azide and 0.5% BSA
Preservative	0.02% Sodium azide
Stabilizer	0.5% BSA
Concentration	0.5 mg/ml
Storage instruction	For continuous use, store undiluted antibody at 2-8°C for up to a week. For long-term storage, aliquot and store at -20°C or below. Storage in frost free freezers is not recommended. Avoid repeated

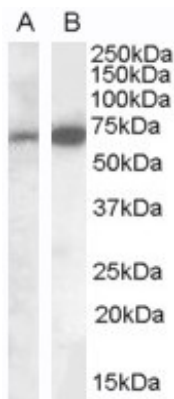
freeze/thaw cycles. Suggest spin the vial prior to opening. The antibody solution should be gently mixed before use.

Note For laboratory research only, not for drug, diagnostic or other use.

Bioinformation

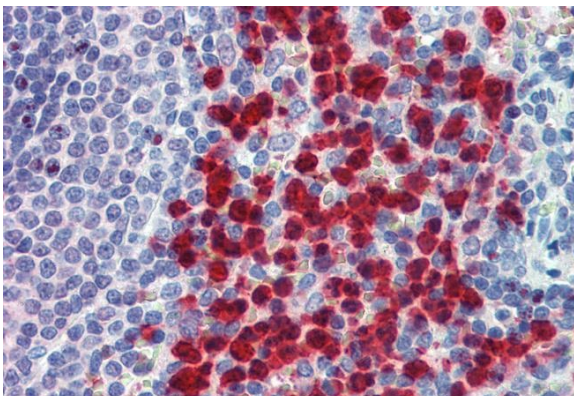
Database links	GeneID: 199731 Human Swiss-port # Q8NFZ8 Human
Gene Symbol	CADM4
Gene Full Name	cell adhesion molecule 4
Function	Involved in the cell-cell adhesion. Has calcium- and magnesium-independent cell-cell adhesion activity. May have tumor-suppressor activity. [UniProt]
Research Area	Cancer antibody
Calculated Mw	43 kDa
PTM	N-glycosylated.

Images



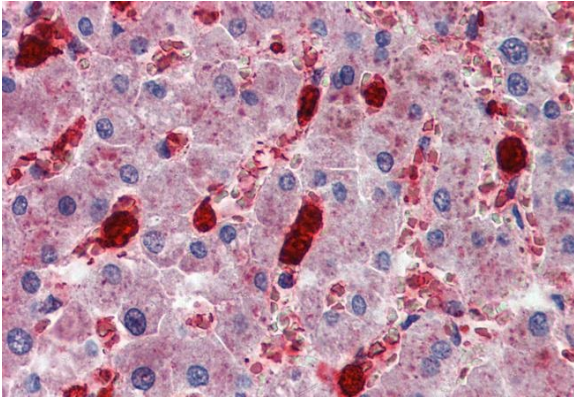
ARG64404 anti-CADM4 antibody WB image

Western Blot: Human Brain (Cerebellum) lysate (35µg protein in RIPA buffer). A) ARG64337 anti-CADM4 antibody (0.1µg/ml) and B) ARG64404 anti-CADM4 antibody (0.05µg/ml).



ARG64404 anti-CADM4 antibody IHC-P image

Immunohistochemistry: Paraffin-embedded Human spleen tissue. Antigen Retrieval: Steam tissue section in Citrate buffer (pH 6.0). The tissue section was stained with ARG64404 anti-CADM4 antibody at 2.5 µg/ml dilution followed by AP-staining.



ARG64404 anti-CADM4 antibody IHC-P image

Immunohistochemistry: Paraffin-embedded Human liver tissue.
Antigen Retrieval: Steam tissue section in Citrate buffer (pH 6.0). The tissue section was stained with ARG64404 anti-CADM4 antibody at 2.5 µg/ml dilution followed by AP-staining.