

ARG64381 anti-CRP2 / CSRP2 antibody

Package: 100 µg
Store at: -20°C

Summary

Product Description	Goat Polyclonal antibody recognizes CRP2 / CSRP2
Tested Reactivity	Hu, Ms, Rat
Predict Reactivity	Hrs
Tested Application	IHC-P, WB
Host	Goat
Clonality	Polyclonal
Isotype	IgG
Target Name	CRP2 / CSRP2
Species	Human
Immunogen	C-ERLGIKPEVQVP
Conjugation	Un-conjugated
Alternate Names	SmLIM; Cysteine and glycine-rich protein 2; LMO5; LMO-5; LIM domain only protein 5; Cysteine-rich protein 2; Smooth muscle cell LIM protein; CRP2

Application Instructions

Application table	Application	Dilution
	IHC-P	3 - 6 µg/ml
	WB	0.1 - 0.3 µg/ml
Application Note	IHC-P: Antigen Retrieval: Steam tissue section in Citrate buffer (pH 6.0). WB: Recommend incubate at RT for 1h. * The dilutions indicate recommended starting dilutions and the optimal dilutions or concentrations should be determined by the scientist.	

Properties

Form	Liquid
Purification	Purified from goat serum by ammonium sulphate precipitation followed by antigen affinity chromatography using the immunizing peptide.
Buffer	Tris saline (pH 7.3), 0.02% Sodium azide and 0.5% BSA
Preservative	0.02% Sodium azide
Stabilizer	0.5% BSA
Concentration	0.5 mg/ml
Storage instruction	For continuous use, store undiluted antibody at 2-8°C for up to a week. For long-term storage, aliquot and store at -20°C or below. Storage in frost free freezers is not recommended. Avoid repeated

freeze/thaw cycles. Suggest spin the vial prior to opening. The antibody solution should be gently mixed before use.

Note

For laboratory research only, not for drug, diagnostic or other use.

Bioinformation

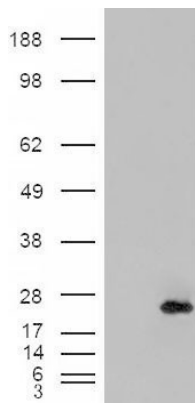
Background

CSR2 is a member of the CSR family of genes, encoding a group of LIM domain proteins, which may be involved in regulatory processes important for development and cellular differentiation. CRP2 contains two copies of the cysteine-rich amino acid sequence motif (LIM) with putative zinc-binding activity, and may be involved in regulating ordered cell growth. Other genes in the family include CSR1 and CSR3. [provided by RefSeq, Jul 2008]

Research Area
Calculated Mw

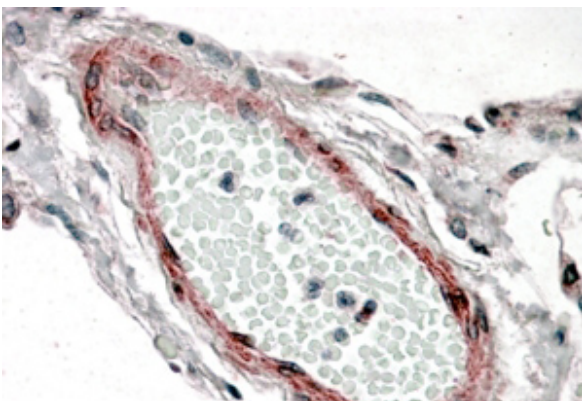
Gene Regulation antibody
21 kDa

Images



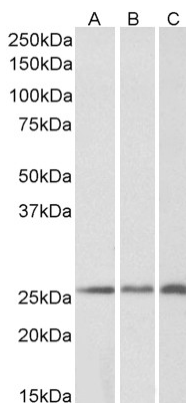
ARG64381 anti-CRP2 / CSR2 antibody WB image

Western Blot: 1). Mock transfection; 2) CRP2 (RC201565) expressing plasmid transfected HEK293 cell lysate stained with ARG64381 anti-CRP2 / CSR2 antibody



ARG64381 anti-CRP2 / CSR2 antibody IHC-P image

Immunohistochemistry: paraffin embedded Human Lung. (Steamed antigen retrieval with citrate buffer pH 6) stained with ARG64381 anti-CRP2 / CSR2 antibody at 3.8 µg/ml dilution followed by AP-staining.



ARG64381 anti-CRP2 / CSR2 antibody WB image

Western blot: 35 µg of Human (A), Mouse (B) and Rat (C) kidney lysates (in RIPA buffer) stained with ARG64381 anti-CRP2 / CSR2 antibody at 0.2 µg/ml dilution and incubated at RT for 1 hour.