

**ARG64341**  
**anti-CRHR1 / CRF-R antibody**Package: 100 µg  
Store at: -20°C

### Summary

Product Description	Goat Polyclonal antibody recognizes CRHR1 / CRF-R
Tested Reactivity	Hu, Ms, Rat
Tested Application	ICC/IF, WB
Host	Goat
Clonality	Polyclonal
Isotype	IgG
Target Name	CRHR1 / CRF-R
Species	Human
Immunogen	C-NEEKSKVHYH
Conjugation	Un-conjugated
Alternate Names	CRH-R-1; CRF-R1; CRFR-1; CRFR1; Corticotropin-releasing factor receptor 1; CRH-R1; Corticotropin-releasing hormone receptor 1; CRF-R-1; Crhr

### Application Instructions

Application table	Application	Dilution
	ICC/IF	Assay - dependent
	WB	0.1 - 0.3 µg/ml

**Application Note** WB: Recommend incubate at RT for 1h.  
\* The dilutions indicate recommended starting dilutions and the optimal dilutions or concentrations should be determined by the scientist.

### Properties

Form	Liquid
Purification	Purified from goat serum by ammonium sulphate precipitation followed by antigen affinity chromatography using the immunizing peptide.
Buffer	Tris saline (pH 7.3), 0.02% Sodium azide and 0.5% BSA
Preservative	0.02% Sodium azide
Stabilizer	0.5% BSA
Concentration	0.5 mg/ml
Storage instruction	For continuous use, store undiluted antibody at 2-8°C for up to a week. For long-term storage, aliquot and store at -20°C or below. Storage in frost free freezers is not recommended. Avoid repeated freeze/thaw cycles. Suggest spin the vial prior to opening. The antibody solution should be gently mixed before use.

Note

For laboratory research only, not for drug, diagnostic or other use.

## Bioinformation

### Background

This gene encodes a G-protein coupled receptor that binds neuropeptides of the corticotropin releasing hormone family that are major regulators of the hypothalamic-pituitary-adrenal pathway. The encoded protein is essential for the activation of signal transduction pathways that regulate diverse physiological processes including stress, reproduction, immune response and obesity. Alternative splicing results in multiple transcript variants, one of which represents a read-through transcript with the neighboring gene MGC57346. [provided by RefSeq, Jan 2012]

Research Area  
Calculated Mw

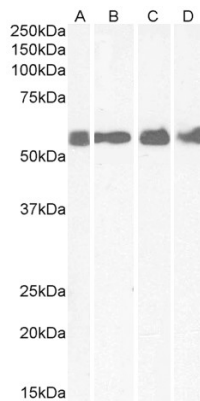
Metabolism antibody; Neuroscience antibody; Signaling Transduction antibody  
51 kDa

## Images



ARG64341 anti-CRHR1 / CRF-R antibody WB image

Western Blot: human colon lysate (35 µg protein in RIPA buffer) stained with ARG64341 anti-CRHR1 / CRF-R (aa 107 - 117) antibody at 0.1 µg/ml dilution.



ARG64341 anti-CRHR1 / CRF-R antibody WB image

Western blot: 35 µg of Human colon (A), Human cerebellum (B), Rat brain (C) and Mouse spinal cord (D) lysates (in RIPA buffer) stained with ARG64341 anti-CRHR1 / CRF-R antibody at 1 µg/ml dilution and incubated at RT for 1 hour.