

ARG64296
anti-GPR3 antibodyPackage: 100 µg
Store at: -20°C

Summary

Product Description	Goat Polyclonal antibody recognizes GPR3
Tested Reactivity	Hu
Predict Reactivity	Ms, Rat, Dog
Tested Application	WB
Specificity	This antibody is not expected to cross-react with GPR6 and GPR12.
Host	Goat
Clonality	Polyclonal
Isotype	IgG
Target Name	GPR3
Species	Human
Immunogen	C-LQRHLLPASH
Conjugation	Un-conjugated
Alternate Names	G-protein coupled receptor 3; ACCA; ACCA orphan receptor

Application Instructions

Application table	Application	Dilution
	WB	0.3 - 1 µg/ml

Application Note WB: Recommend incubate at RT for 1h.
* The dilutions indicate recommended starting dilutions and the optimal dilutions or concentrations should be determined by the scientist.

Properties

Form	Liquid
Purification	Purified from goat serum by ammonium sulphate precipitation followed by antigen affinity chromatography using the immunizing peptide.
Buffer	Tris saline (pH 7.3), 0.02% Sodium azide and 0.5% BSA
Preservative	0.02% Sodium azide
Stabilizer	0.5% BSA
Concentration	0.5 mg/ml
Storage instruction	For continuous use, store undiluted antibody at 2-8°C for up to a week. For long-term storage, aliquot and store at -20°C or below. Storage in frost free freezers is not recommended. Avoid repeated freeze/thaw cycles. Suggest spin the vial prior to opening. The antibody solution should be gently mixed before use.

Note For laboratory research only, not for drug, diagnostic or other use.

Bioinformation

Database links [GeneID: 2827 Human](#)

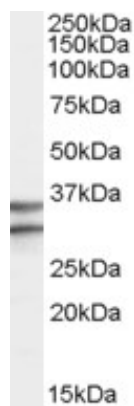
[Swiss-port # P46089 Human](#)

Background This gene is a member of the G protein-coupled receptor family and is found in the cell membrane. G protein-coupled receptors, characterized by a seven transmembrane domain motif, are involved in translating outside signals into G protein mediated intracellular effects. The encoded protein activates adenylate cyclase and modulates amyloid-beta production in a mouse model, suggesting that it may play a role in Alzheimer's disease. [provided by RefSeq, Oct 2012]

Research Area Signaling Transduction antibody

Calculated Mw 35 kDa

Images



ARG64296 anti-GPR3 antibody WB image

Western Blot: Human Brain (Frontal Cortex) lysate (35 μ g protein in RIPA buffer) stained with ARG64296 anti-GPR3 antibody at 0.3 μ g/ml dilution.