

ARG64160 anti-NPY2R antibody

Package: 100 µg
Store at: -20°C

Summary

Product Description	Goat Polyclonal antibody recognizes NPY2R
Tested Reactivity	Rat
Predict Reactivity	Hu, Ms, Dog
Tested Application	IP, WB
Specificity	Please note this antibody was designed using the Mouse sequence NP_032757.1, which differs by 1 amino acid from the Human sequence NP_000901.1.
Host	Goat
Clonality	Polyclonal
Isotype	IgG
Target Name	NPY2R
Species	Mouse
Immunogen	C-KAKKNLEVKKNN
Conjugation	Un-conjugated
Alternate Names	Y2 receptor; NPY-Y2 receptor; NPY2-R; Neuropeptide Y receptor type 2

Application Instructions

Application table	Application	Dilution
	IP	Assay - dependent
	WB	0.1 - 0.3 µg/ml

Application Note
WB: Recommend incubate at RT for 1h.
* The dilutions indicate recommended starting dilutions and the optimal dilutions or concentrations should be determined by the scientist.

Properties

Form	Liquid
Purification	Purified from goat serum by ammonium sulphate precipitation followed by antigen affinity chromatography using the immunizing peptide.
Buffer	Tris saline (pH 7.3), 0.02% Sodium azide and 0.5% BSA
Preservative	0.02% Sodium azide
Stabilizer	0.5% BSA
Concentration	0.5 mg/ml
Storage instruction	For continuous use, store undiluted antibody at 2-8°C for up to a week. For long-term storage, aliquot and store at -20°C or below. Storage in frost free freezers is not recommended. Avoid repeated

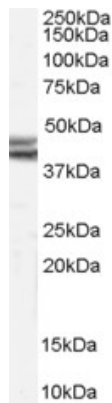
freeze/thaw cycles. Suggest spin the vial prior to opening. The antibody solution should be gently mixed before use.

Note For laboratory research only, not for drug, diagnostic or other use.

Bioinformation

Gene Symbol	NPY2R
Gene Full Name	neuropeptide Y receptor Y2
Function	Receptor for neuropeptide Y and peptide YY. The rank order of affinity of this receptor for pancreatic polypeptides is PYY > NPY > PYY (3-36) > NPY (2-36) > [Ile-31, Gln-34] PP > [Leu-31, Pro-34] NPY > PP, [Pro-34] PYY and NPY free acid. [UniProt]
Research Area	Cell Biology and Cellular Response antibody; Metabolism antibody; Neuroscience antibody
Calculated Mw	43 kDa

Images



ARG64160 anti-NPY2R antibody WB image

Western blot: Rat Brain lysate (35 μ g protein in RIPA buffer) stained with ARG64160 anti-NPY2R antibody at 0.1 μ g/ml dilution.