

ARG64153 anti-Actin like 7B antibody

Package: 100 µg
Store at: -20°C

Summary

Product Description	Goat Polyclonal antibody recognizes Actin like 7B
Tested Reactivity	Rat
Predict Reactivity	Ms
Tested Application	WB
Specificity	This antibody is not expected to cross-react with Actin-like 7A.
Host	Goat
Clonality	Polyclonal
Isotype	IgG
Target Name	Actin like 7B
Species	Mouse
Immunogen	C-DELHVDYELPDGK
Conjugation	Un-conjugated
Alternate Names	Actin-like protein 7B; Actin-like-7-beta; Tact1

Application Instructions

Application table	Application	Dilution
	WB	0.5 - 1.5 µg/ml

Application Note WB: Recommend incubate at RT for 1h.
* The dilutions indicate recommended starting dilutions and the optimal dilutions or concentrations should be determined by the scientist.

Properties

Form	Liquid
Purification	Purified from goat serum by ammonium sulphate precipitation followed by antigen affinity chromatography using the immunizing peptide.
Buffer	Tris saline (pH 7.3), 0.02% Sodium azide and 0.5% BSA
Preservative	0.02% Sodium azide
Stabilizer	0.5% BSA
Concentration	0.5 mg/ml
Storage instruction	For continuous use, store undiluted antibody at 2-8°C for up to a week. For long-term storage, aliquot and store at -20°C or below. Storage in frost free freezers is not recommended. Avoid repeated freeze/thaw cycles. Suggest spin the vial prior to opening. The antibody solution should be gently mixed before use.

Note

For laboratory research only, not for drug, diagnostic or other use.

Bioinformation

Database links

[GeneID: 313183 Rat](#)

[Swiss-port # Q4QR76 Rat](#)

Gene Symbol

Actl7b

Gene Full Name

actin-like 7b

Background

The protein encoded by this gene is a member of a family of actin-related proteins (ARPs) which share significant amino acid sequence identity to conventional actins. Both actins and ARPs have an actin fold, which is an ATP-binding cleft, as a common feature. The ARPs are involved in diverse cellular processes, including vesicular transport, spindle orientation, nuclear migration and chromatin remodeling. This gene (ACTL7B), and related gene, ACTL7A, are intronless, and are located approximately 4 kb apart in a head-to-head orientation within the familial dysautonomia candidate region on 9q31. Based on mutational analysis of the ACTL7B gene in patients with this disorder, it was concluded that it is unlikely to be involved in the pathogenesis of dysautonomia. Unlike ACTL7A, the ACTL7B gene is expressed predominantly in the testis, however, its exact function is not known. [provided by RefSeq, Jul 2008]

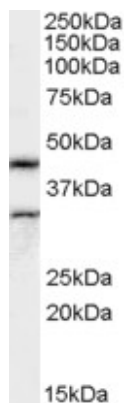
Research Area

Signaling Transduction antibody

Calculated Mw

45 kDa

Images



ARG64153 anti-Actin like 7B antibody WB image

Western blot: Rat Testes lysate (35 µg protein in RIPA buffer) stained with ARG64153 anti-Actin like 7B antibody at 0.5 µg/ml dilution.