

ARG64147
anti-APPL1 antibodyPackage: 100 µg
Store at: -20°C

Summary

Product Description	Goat Polyclonal antibody recognizes APPL1
Tested Reactivity	Rat
Predict Reactivity	Hu, Ms, Cow, Dog
Tested Application	WB
Host	Goat
Clonality	Polyclonal
Isotype	IgG
Target Name	APPL1
Species	Human
Immunogen	C-NRYSRLSKKRENDK
Conjugation	Un-conjugated
Alternate Names	Dip13-alpha; Adapter protein containing PH domain, PTB domain and leucine zipper motif 1; APPL; DIP13alpha; DCC-interacting protein 13-alpha

Application Instructions

Application table	Application	Dilution
	WB	0.3 - 1 µg/ml

Application Note WB: Recommend incubate at RT for 1h.
* The dilutions indicate recommended starting dilutions and the optimal dilutions or concentrations should be determined by the scientist.

Properties

Form	Liquid
Purification	Purified from goat serum by ammonium sulphate precipitation followed by antigen affinity chromatography using the immunizing peptide.
Buffer	Tris saline (pH 7.3), 0.02% Sodium azide and 0.5% BSA
Preservative	0.02% Sodium azide
Stabilizer	0.5% BSA
Concentration	0.5 mg/ml
Storage instruction	For continuous use, store undiluted antibody at 2-8°C for up to a week. For long-term storage, aliquot and store at -20°C or below. Storage in frost free freezers is not recommended. Avoid repeated freeze/thaw cycles. Suggest spin the vial prior to opening. The antibody solution should be gently mixed before use.

Note

For laboratory research only, not for drug, diagnostic or other use.

Bioinformation

Background

The protein encoded by this gene has been shown to be involved in the regulation of cell proliferation, and in the crosstalk between the adiponectin signalling and insulin signalling pathways. The encoded protein binds many other proteins, including RAB5A, DCC, AKT2, PIK3CA, adiponectin receptors, and proteins of the NuRD/MeCP1 complex. This protein is found associated with endosomal membranes, but can be released by EGF and translocated to the nucleus. [provided by RefSeq, Jul 2008]

Research Area

Cell Biology and Cellular Response antibody; Cell Death antibody; Developmental Biology antibody; Neuroscience antibody; Signaling Transduction antibody

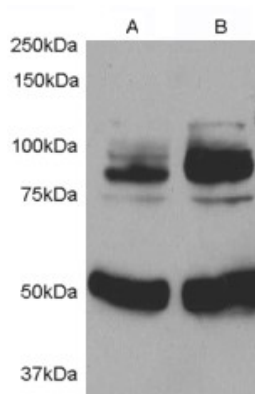
Calculated Mw

80 kDa

PTM

Phosphorylation at Ser-410 by PKA severely impairs binding to OCRL.

Images



ARG64147 anti-APPL1 antibody WB image

Western Blot: 1) Rat Aortic Smooth Muscle cell lysate 2) after infection with Human APPL1 adenovirus for 48hrs. stained with ARG64147 anti-APPL1 antibody at 0.5 µg/ml dilution.