

## ARG64128 anti-CRHR1 / CRF-R antibody

Package: 100 µg  
Store at: -20°C

### Summary

Product Description	Goat Polyclonal antibody recognizes CRHR1 / CRF-R
Tested Reactivity	Hu
Predict Reactivity	Ms, Rat, Cow, Dog, Sheep
Tested Application	ICC/IF, IHC-P, WB
Host	Goat
Clonality	Polyclonal
Isotype	IgG
Target Name	CRHR1 / CRF-R
Species	Human
Immunogen	KLYYDNEKCWFGKR
Conjugation	Un-conjugated
Alternate Names	CRH-R-1; CRF-R1; CRFR-1; CRFR1; Corticotropin-releasing factor receptor 1; CRH-R1; Corticotropin-releasing hormone receptor 1; CRF-R-1; Crhr

### Application Instructions

Application table	Application	Dilution
	ICC/IF	10 µg/ml
	IHC-P	5 µg/ml
	WB	Assay - dependent
Application Note	WB: Recommend incubate at RT for 1h. IHC-P: Antigen Retrieval: Steam tissue section in Citrate buffer (pH 6.0). * The dilutions indicate recommended starting dilutions and the optimal dilutions or concentrations should be determined by the scientist.	

### Properties

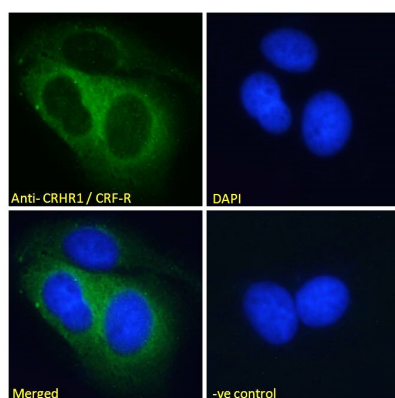
Form	Liquid
Purification	Purified from goat serum by ammonium sulphate precipitation followed by antigen affinity chromatography using the immunizing peptide.
Buffer	Tris saline (pH 7.3), 0.02% Sodium azide and 0.5% BSA
Preservative	0.02% Sodium azide
Stabilizer	0.5% BSA
Concentration	0.5 mg/ml

Storage instruction	For continuous use, store undiluted antibody at 2-8°C for up to a week. For long-term storage, aliquot and store at -20°C or below. Storage in frost free freezers is not recommended. Avoid repeated freeze/thaw cycles. Suggest spin the vial prior to opening. The antibody solution should be gently mixed before use.
Note	For laboratory research only, not for drug, diagnostic or other use.

## Bioinformation

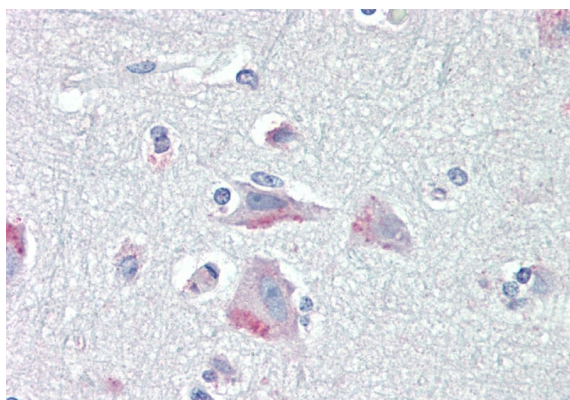
Database links	<a href="#">GeneID: 1394 Human</a> <a href="#">Swiss-port # P34998 Human</a>
Background	This gene encodes a G-protein coupled receptor that binds neuropeptides of the corticotropin releasing hormone family that are major regulators of the hypothalamic-pituitary-adrenal pathway. The encoded protein is essential for the activation of signal transduction pathways that regulate diverse physiological processes including stress, reproduction, immune response and obesity. Alternative splicing results in multiple transcript variants, one of which represents a read-through transcript with the neighboring gene MGC57346. [provided by RefSeq, Jan 2012]
Research Area	Metabolism antibody; Neuroscience antibody; Signaling Transduction antibody
Calculated Mw	51 kDa

## Images



ARG64128 anti-CRHR1 / CRF-R antibody ICC/IF image

Immunofluorescence: Paraformaldehyde fixed MCF7 cells permeabilized with 0.15% Triton. Cells were stained with ARG64128 anti-CRHR1 / CRF-R antibody (green) at 10 µg/ml dilution for 1 hour. DAPI (blue) for nuclear staining. Negative control: Unimmunized goat IgG (green) at 10 µg/ml dilution.



ARG64128 anti-CRHR1 / CRF-R antibody IHC-P image

Immunohistochemistry: Paraffin-embedded Human cortex tissue. Antigen Retrieval: Steam tissue section in Citrate buffer (pH 6.0). The tissue section was stained with ARG64128 anti-CRHR1 / CRF-R antibody at 5 µg/ml dilution followed by AP-staining.