

ARG64109
anti-RNF213 / C17orf 27 antibodyPackage: 100 µg
Store at: -20°C

Summary

Product Description	Goat Polyclonal antibody recognizes RNF213 / C17orf 27
Tested Reactivity	Hu
Tested Application	IHC-P
Host	Goat
Clonality	Polyclonal
Isotype	IgG
Target Name	RNF213 / C17orf 27
Species	Human
Immunogen	C-KTAAVLKWNRE
Conjugation	Un-conjugated
Alternate Names	MYMY2; EC 6.3.2.-; NET57; E3 ubiquitin-protein ligase RNF213; ALK lymphoma oligomerization partner on chromosome 17; KIAA1618; RING finger protein 213; Mysterin; ALO17; MYSTR; C17orf27

Application Instructions

Application table	Application	Dilution
	IHC-P	2.5 µg/ml
Application Note	IHC-P: Antigen Retrieval: Steam tissue section in Citrate buffer (pH 6.0). * The dilutions indicate recommended starting dilutions and the optimal dilutions or concentrations should be determined by the scientist.	

Properties

Form	Liquid
Purification	Purified from goat serum by ammonium sulphate precipitation followed by antigen affinity chromatography using the immunizing peptide.
Buffer	Tris saline (pH 7.3), 0.02% Sodium azide and 0.5% BSA
Preservative	0.02% Sodium azide
Stabilizer	0.5% BSA
Concentration	0.5 mg/ml
Storage instruction	For continuous use, store undiluted antibody at 2-8°C for up to a week. For long-term storage, aliquot and store at -20°C or below. Storage in frost free freezers is not recommended. Avoid repeated freeze/thaw cycles. Suggest spin the vial prior to opening. The antibody solution should be gently mixed before use.
Note	For laboratory research only, not for drug, diagnostic or other use.

Bioinformation

Database links

[GeneID: 57674 Human](#)

[Swiss-port # Q63HN8 Human](#)

Background

This gene encodes a protein containing a C3HC4-type RING finger domain, which is a specialized type of Zn-finger that binds two atoms of zinc and is thought to be involved in mediating protein-protein interactions. The protein also contains an AAA domain, which is associated with ATPase activity. This gene is a susceptibility gene for Moyamoya disease, a vascular disorder of intracranial arteries. This gene is also a translocation partner in anaplastic large cell lymphoma and inflammatory myofibroblastic tumor cases, where a t(2;17)(p23;q25) translocation has been identified with the anaplastic lymphoma kinase (ALK) gene on chromosome 2, and a t(8;17)(q24;q25) translocation has been identified with the MYC gene on chromosome 8. Alternative splicing results in multiple transcript variants. [provided by RefSeq, Dec 2011]

Research Area

Cell Biology and Cellular Response antibody

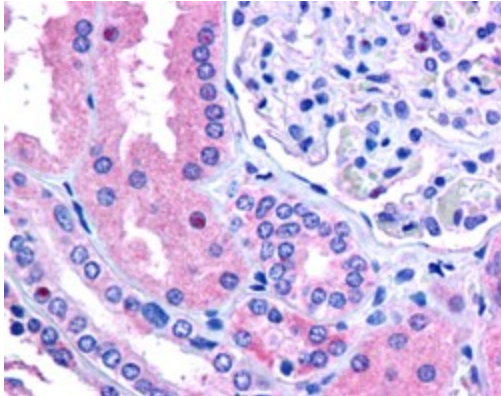
Calculated Mw

591 kDa

PTM

Autoubiquitinated.

Images



ARG64109 anti-RNF213 / C17orf 27 antibody IHC-P image

Immunohistochemistry: Paraffin embedded Human kidney. (Steamed antigen retrieval with citrate buffer pH 6) stained with ARG64109 anti-RNF213 / C17orf 27 antibody at 2.5 µg/ml dilution followed by AP-staining.