

## ARG64068 anti-Syntenin 1 antibody

Package: 100 µg  
Store at: -20°C

### Summary

Product Description	Goat Polyclonal antibody recognizes Syntenin 1
Tested Reactivity	Hu
Predict Reactivity	Ms, Rat, Dog
Tested Application	IHC-P, WB
Specificity	This antibody is expected to recognise isoform 1 (NP_005616.2 and NP_001007068.1) and isoform 3 (NP_001007070.1 and NP_001007071.1) only.
Host	Goat
Clonality	Polyclonal
Isotype	IgG
Target Name	Syntenin 1
Species	Human
Immunogen	SLEDLKVDKVIQAQ-C
Conjugation	Un-conjugated
Alternate Names	SYCL; MDA-9; MDA9; Pro-TGF-alpha cytoplasmic domain-interacting protein 18; Syndecan-binding protein 1; TACIP18; Scaffold protein Pbp1; ST1; Syntenin-1; Melanoma differentiation-associated protein 9

### Application Instructions

Application table	Application	Dilution
	IHC-P	10 µg/ml
	WB	0.01 - 0.03 µg/ml
Application Note	WB: Recommend incubate at RT for 1h. IHC-P: Antigen Retrieval: Steam tissue section in Citrate buffer (pH 6.0). * The dilutions indicate recommended starting dilutions and the optimal dilutions or concentrations should be determined by the scientist.	

### Properties

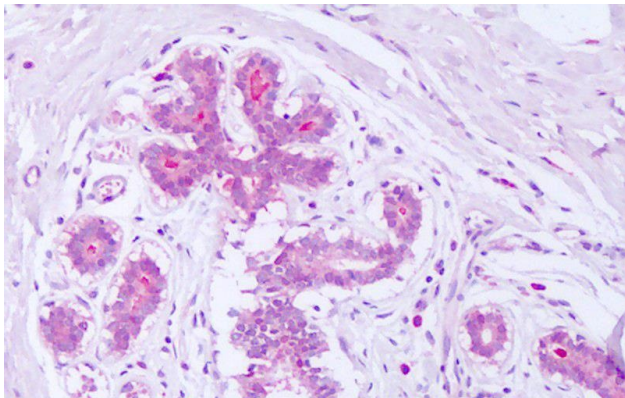
Form	Liquid
Purification	Purified from goat serum by ammonium sulphate precipitation followed by antigen affinity chromatography using the immunizing peptide.
Buffer	Tris saline (pH 7.3), 0.02% Sodium azide and 0.5% BSA
Preservative	0.02% Sodium azide
Stabilizer	0.5% BSA

Concentration	0.5 mg/ml
Storage instruction	For continuous use, store undiluted antibody at 2-8°C for up to a week. For long-term storage, aliquot and store at -20°C or below. Storage in frost free freezers is not recommended. Avoid repeated freeze/thaw cycles. Suggest spin the vial prior to opening. The antibody solution should be gently mixed before use.
Note	For laboratory research only, not for drug, diagnostic or other use.

## Bioinformation

Database links	<a href="#">GeneID: 6386 Human</a> <a href="#">Swiss-port # O00560 Human</a>
Background	The protein encoded by this gene was initially identified as a molecule linking syndecan-mediated signaling to the cytoskeleton. The syntenin protein contains tandemly repeated PDZ domains that bind the cytoplasmic, C-terminal domains of a variety of transmembrane proteins. This protein may also affect cytoskeletal-membrane organization, cell adhesion, protein trafficking, and the activation of transcription factors. The protein is primarily localized to membrane-associated adherens junctions and focal adhesions but is also found at the endoplasmic reticulum and nucleus. Alternative splicing results in multiple transcript variants encoding different isoforms. [provided by RefSeq, Jul 2008]
Research Area	Neuroscience antibody
Calculated Mw	32 kDa
PTM	Phosphorylated on tyrosine residues.

## Images



ARG64068 anti-Syntenin 1 antibody IHC-P image

Immunohistochemistry: Paraffin-embedded Human breast tissue. Antigen Retrieval: Steam tissue section in Citrate buffer (pH 6.0). The tissue section was stained with ARG64068 anti-Syntenin 1 antibody at 10 µg/ml dilution followed by AP-staining.



ARG64068 anti-Syntenin 1 antibody WB image

Western blot: 35 µg of Human HEK293 cell lysate (in RIPA buffer) stained with ARG64068 anti-Syntenin 1 antibody at 0.01 µg/ml dilution and incubated at RT for 1 hour.