

ARG64058 anti-XRCC4 like factor / NHEJ1 antibody

Package: 100 µg
Store at: -20°C

Summary

Product Description	Goat Polyclonal antibody recognizes XRCC4 like factor / NHEJ1
Tested Reactivity	Hu
Predict Reactivity	Dog
Tested Application	IHC-P, WB
Host	Goat
Clonality	Polyclonal
Isotype	IgG
Target Name	XRCC4 like factor / NHEJ1
Species	Human
Immunogen	C-QRPQLSKVKRKKPR
Conjugation	Un-conjugated
Alternate Names	XLF; Protein cernunnos; XRCC4-like factor; Non-homologous end-joining factor 1

Application Instructions

Application table	Application	Dilution
	IHC-P	2 - 4 µg/ml
	WB	0.1 - 0.3 µg/ml
Application Note	IHC-P: Antigen Retrieval: Steam tissue section in Citrate buffer (pH 6.0). WB: Recommend incubate at RT for 1h. * The dilutions indicate recommended starting dilutions and the optimal dilutions or concentrations should be determined by the scientist.	

Properties

Form	Liquid
Purification	Purified from goat serum by ammonium sulphate precipitation followed by antigen affinity chromatography using the immunizing peptide.
Buffer	Tris saline (pH 7.3), 0.02% Sodium azide and 0.5% BSA
Preservative	0.02% Sodium azide
Stabilizer	0.5% BSA
Concentration	0.5 mg/ml
Storage instruction	For continuous use, store undiluted antibody at 2-8°C for up to a week. For long-term storage, aliquot and store at -20°C or below. Storage in frost free freezers is not recommended. Avoid repeated freeze/thaw cycles. Suggest spin the vial prior to opening. The antibody solution should be gently mixed

before use.

Note

For laboratory research only, not for drug, diagnostic or other use.

Bioinformation

Database links

[GeneID: 79840 Human](#)

[Swiss-port # Q9H9Q4 Human](#)

Background

Double-strand breaks in DNA result from genotoxic stresses and are among the most damaging of DNA lesions. This gene encodes a DNA repair factor essential for the nonhomologous end-joining pathway, which preferentially mediates repair of double-stranded breaks. Mutations in this gene cause different kinds of severe combined immunodeficiency disorders. [provided by RefSeq, Jul 2008]

Research Area

Gene Regulation antibody

Calculated Mw

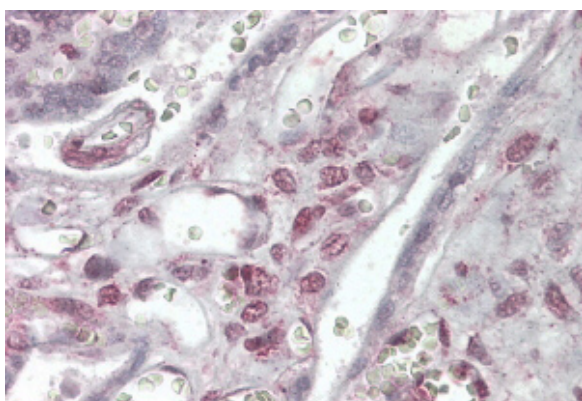
33 kDa

Images



ARG64058 anti-XRCC4 like factor / NHEJ1 antibody WB image

Western blot: Human Thyroid lysate (35 µg protein in RIPA buffer) stained with ARG64058 anti-XRCC4 like factor / NHEJ1 antibody at 0.1 µg/ml dilution.



ARG64058 anti-XRCC4 like factor / NHEJ1 antibody IHC-P image

Immunohistochemistry: Paraffin embedded Human Placenta. (Steamed antigen retrieval with citrate buffer pH 6) stained with ARG64058 anti-XRCC4 like factor / NHEJ1 antibody at 3.8 µg/ml dilution followed by AP-staining.