

ARG63987 anti-ChAT antibody

Package: 100 µg
Store at: -20°C

Summary

Product Description	Goat Polyclonal antibody recognizes ChAT
Tested Reactivity	Ms, Rat
Tested Application	IHC-Fr, WB
Specificity	This antibody is NOT expected to cross-react to Human ChAT.
Host	Goat
Clonality	Polyclonal
Isotype	IgG
Target Name	ChAT
Species	Mouse
Immunogen	C-KERARGPTKPSNLD
Conjugation	Un-conjugated
Alternate Names	CMS1A; Choline acetylase; CHOACTase; CHOACTASE; EC 2.3.1.6; CMS6; Choline O-acetyltransferase; ChAT; CMS1A2

Application Instructions

Application table	Application	Dilution
	IHC-Fr	1:2000
	WB	0.3 - 1 µg/ml
Application Note	WB: Recommend incubate at RT for 1h. * The dilutions indicate recommended starting dilutions and the optimal dilutions or concentrations should be determined by the scientist.	

Properties

Form	Liquid
Purification	Purified from goat serum by ammonium sulphate precipitation followed by antigen affinity chromatography using the immunizing peptide.
Buffer	Tris saline (pH 7.3), 0.02% Sodium azide and 0.5% BSA
Preservative	0.02% Sodium azide
Stabilizer	0.5% BSA
Concentration	0.5 mg/ml
Storage instruction	For continuous use, store undiluted antibody at 2-8°C for up to a week. For long-term storage, aliquot and store at -20°C or below. Storage in frost free freezers is not recommended. Avoid repeated freeze/thaw cycles. Suggest spin the vial prior to opening. The antibody solution should be gently mixed

before use.

Note

For laboratory research only, not for drug, diagnostic or other use.

Bioinformation

Database links

[GeneID: 12647 Mouse](#)

Gene Symbol

Chat

Background

This gene encodes an enzyme which catalyzes the biosynthesis of the neurotransmitter acetylcholine. This gene product is a characteristic feature of cholinergic neurons, and changes in these neurons may explain some of the symptoms of Alzheimer's disease. Polymorphisms in this gene have been associated with Alzheimer's disease and mild cognitive impairment. Mutations in this gene are associated with congenital myasthenic syndrome associated with episodic apnea. Multiple transcript variants encoding different isoforms have been found for this gene, and some of these variants have been shown to encode more than one isoform. [provided by RefSeq, May 2010]

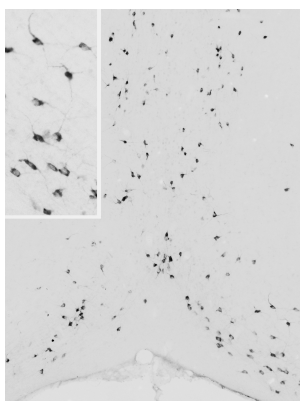
Research Area

Neuroscience antibody

Calculated Mw

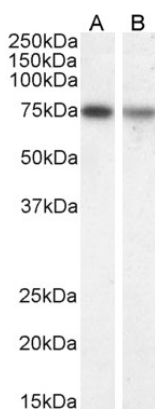
83 kDa

Images



ARG63987 anti-ChAT antibody IHC-Fr image

Immunohistochemistry: PFA-perfused cryosection of Mouse forebrain tissue stained with ARG63987 anti-ChAT antibody at 1:2000 dilution.



ARG63987 anti-ChAT antibody WB image

Western blot: 35 µg of Mouse brain (A) and Rat brain (B) lysates (in RIPA buffer) stained with ARG63987 anti-ChAT antibody at 1 µg/ml dilution and incubated at RT for 1 hour.