

## ARG63947 anti-PRODH antibody

Package: 100 µg  
Store at: -20°C

### Summary

|                     |   |
|---------------------|---|
| Product Description | Goat Polyclonal antibody recognizes PRODH   |
| Tested Reactivity   | Hu  |
| Predict Reactivity  | Ms  |
| Tested Application  | IHC-P, WB   |
| Host                | Goat  |
| Clonality           | Polyclonal  |
| Isotype             | IgG   |
| Target Name         | PRODH   |
| Species             | Human   |
| Immunogen           | C-ERDGS GTNKRDKQYQ  |
| Conjugation         | Un-conjugated   |
| Alternate Names     | TP53I6; Proline oxidase 2; POX; EC 1.5.5.2; PRODH1; PRODH2; HSPOX2; p53-induced gene 6 protein; PIG6; Proline dehydrogenase 1, mitochondrial; Proline oxidase |

### Application Instructions

|                   |  |                   |
|-------------------|--|-------------------|
| Application table | Application  | Dilution          |
|                   | IHC-P  | 3 - 5 µg/ml       |
|                   | WB   | Assay - dependent |
| Application Note  | WB: Recommend incubate at RT for 1h.<br>IHC-P: Antigen Retrieval: Steam tissue section in Citrate buffer (pH 6.0).<br>* The dilutions indicate recommended starting dilutions and the optimal dilutions or concentrations should be determined by the scientist. |                   |

### Properties

|                     |   |
|---------------------|---|
| Form                | Liquid  |
| Purification        | Purified from goat serum by ammonium sulphate precipitation followed by antigen affinity chromatography using the immunizing peptide.   |
| Buffer              | Tris saline (pH 7.3), 0.02% Sodium azide and 0.5% BSA   |
| Preservative        | 0.02% Sodium azide  |
| Stabilizer          | 0.5% BSA  |
| Concentration       | 0.5 mg/ml   |
| Storage instruction | For continuous use, store undiluted antibody at 2-8°C for up to a week. For long-term storage, aliquot and store at -20°C or below. Storage in frost free freezers is not recommended. Avoid repeated |

freeze/thaw cycles. Suggest spin the vial prior to opening. The antibody solution should be gently mixed before use.

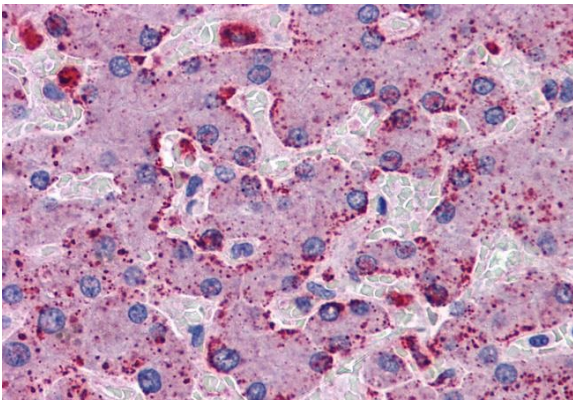
**Note** For laboratory research only, not for drug, diagnostic or other use.

## Bioinformation

---

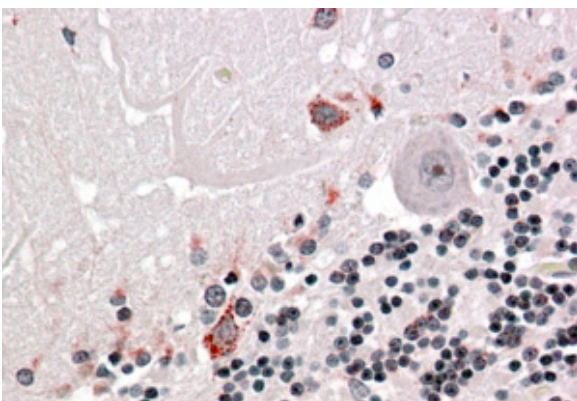
|                |  |
|----------------|--|
| Database links | <a href="#">GeneID: 5625 Human</a><br><a href="#">Swiss-port # O43272 Human</a>  |
| Background     | This gene encodes a mitochondrial protein that catalyzes the first step in proline degradation. Mutations in this gene are associated with hyperprolinemia type 1 and susceptibility to schizophrenia 4 (SCZD4). This gene is located on chromosome 22q11.21, a region which has also been associated with the contiguous gene deletion syndromes, DiGeorge and CATCH22. Alternatively spliced transcript variants encoding different isoforms have been found for this gene. [provided by RefSeq, Aug 2010] |
| Research Area  | Cancer antibody; Cell Biology and Cellular Response antibody; Cell Death antibody; Metabolism antibody; Signaling Transduction antibody  |
| Calculated Mw  | 68 kDa   |

## Images



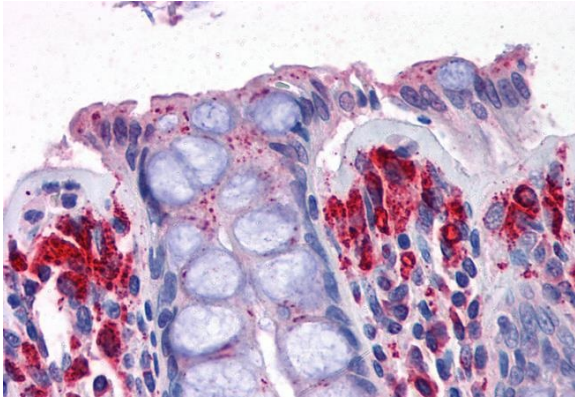
ARG63947 anti-PRODH antibody IHC-P image

Immunohistochemistry: Paraffin-embedded Human liver tissue. Antigen Retrieval: Steam tissue section in Citrate buffer (pH 6.0). The tissue section was stained with ARG63947 anti-PRODH antibody at 3.75 µg/ml dilution followed by AP-staining.



ARG63947 anti-PRODH antibody IHC-P image

Immunohistochemistry: paraffin embedded Human Cerebellum. (Steamed antigen retrieval with citrate buffer pH 6) stained with ARG63947 anti-PRODH antibody at 3.8 µg/ml dilution followed by AP-staining.



ARG63947 anti-PRODH antibody IHC-P image

Immunohistochemistry: Paraffin-embedded Human colon tissue.  
Antigen Retrieval: Steam tissue section in Citrate buffer (pH 6.0). The tissue section was stained with ARG63947 anti-PRODH antibody at 3.75  $\mu\text{g}/\text{ml}$  dilution followed by AP-staining.