

ARG63946
anti-GRK2 antibodyPackage: 100 µg
Store at: -20°C

Summary

Product Description	Goat Polyclonal antibody recognizes GRK2
Tested Reactivity	Hu
Predict Reactivity	Ms, Rat, Cow, Dog, Pig
Tested Application	WB
Host	Goat
Clonality	Polyclonal
Isotype	IgG
Target Name	GRK2
Species	Human
Immunogen	C-RDAYREAQQLVQR
Conjugation	Un-conjugated
Alternate Names	BETA-ARK1; Beta-adrenergic receptor kinase 1; GRK2; BARK1; EC 2.7.11.15; Beta-ARK-1; G-protein coupled receptor kinase 2

Application Instructions

Application table	Application	Dilution
	WB	0.3 - 2 µg/ml

Application Note WB: Recommend incubate at RT for 1h.
* The dilutions indicate recommended starting dilutions and the optimal dilutions or concentrations should be determined by the scientist.

Properties

Form	Liquid
Purification	Purified from goat serum by ammonium sulphate precipitation followed by antigen affinity chromatography using the immunizing peptide.
Buffer	Tris saline (pH 7.3), 0.02% Sodium azide and 0.5% BSA
Preservative	0.02% Sodium azide
Stabilizer	0.5% BSA
Concentration	0.5 mg/ml
Storage instruction	For continuous use, store undiluted antibody at 2-8°C for up to a week. For long-term storage, aliquot and store at -20°C or below. Storage in frost free freezers is not recommended. Avoid repeated freeze/thaw cycles. Suggest spin the vial prior to opening. The antibody solution should be gently mixed before use.

Note For laboratory research only, not for drug, diagnostic or other use.

Bioinformation

Database links [GeneID: 156 Human](#)

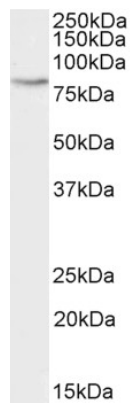
[Swiss-port # P25098 Human](#)

Background The product of this gene phosphorylates the beta-2-adrenergic receptor and appears to mediate agonist-specific desensitization observed at high agonist concentrations. This protein is an ubiquitous cytosolic enzyme that specifically phosphorylates the activated form of the beta-adrenergic and related G-protein-coupled receptors. Abnormal coupling of beta-adrenergic receptor to G protein is involved in the pathogenesis of the failing heart. [provided by RefSeq, Jul 2008]

Research Area Neuroscience antibody; Signaling Transduction antibody

Calculated Mw 80 kDa

Images



ARG63946 anti-GRK2 antibody WB image

Western blot: 35 µg of Daudi cell lysate (in RIPA buffer) stained with ARG63946 anti-GRK2 antibody at 2 µg/ml dilution and incubated at RT for 1 hour.