

ARG63942 anti-SMAD9 antibody

Package: 100 µg
Store at: -20°C

Summary

Product Description	Goat Polyclonal antibody recognizes SMAD9
Tested Reactivity	Hu
Predict Reactivity	Ms, Rat, Dog
Tested Application	IHC-P, WB
Specificity	This antibody is not expected to cross-react with SMAD1 and SMAD5.
Host	Goat
Clonality	Polyclonal
Isotype	IgG
Target Name	SMAD9
Species	Human
Immunogen	C-HSEPLMPHNATYPD
Conjugation	Un-conjugated
Alternate Names	Mothers against decapentaplegic homolog 9; MADH9; SMAD8A; Smad9; SMAD8B; Mothers against DPP homolog 9; MADH6; PPH2; Madh6; SMAD family member 9; SMAD 9; MAD homolog 9; SMAD8

Application Instructions

Application table	Application	Dilution
	IHC-P	5 µg/ml
	WB	0.3 - 1.0 µg/ml

Application Note
WB: Recommend incubate at RT for 1h.
IHC-P: Antigen Retrieval: Steam tissue section in Citrate buffer (pH 6.0).
* The dilutions indicate recommended starting dilutions and the optimal dilutions or concentrations should be determined by the scientist.

Properties

Form	Liquid
Purification	Purified from goat serum by ammonium sulphate precipitation followed by antigen affinity chromatography using the immunizing peptide.
Buffer	Tris saline (pH 7.3), 0.02% Sodium azide and 0.5% BSA
Preservative	0.02% Sodium azide
Stabilizer	0.5% BSA
Concentration	0.5 mg/ml

Storage instruction	For continuous use, store undiluted antibody at 2-8°C for up to a week. For long-term storage, aliquot and store at -20°C or below. Storage in frost free freezers is not recommended. Avoid repeated freeze/thaw cycles. Suggest spin the vial prior to opening. The antibody solution should be gently mixed before use.
Note	For laboratory research only, not for drug, diagnostic or other use.

Bioinformation

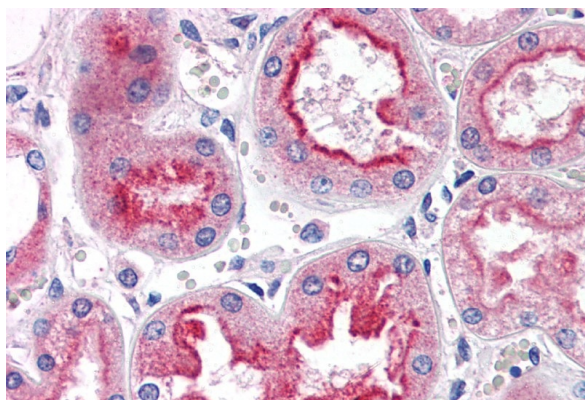
Database links	GeneID: 4093 Human Swiss-port # O15198 Human
Background	The protein encoded by this gene is a member of the SMAD family, which transduces signals from TGF-beta family members. The encoded protein is activated by bone morphogenetic proteins and interacts with SMAD4. Two transcript variants encoding different isoforms have been found for this gene.[provided by RefSeq, Jan 2010]
Research Area	Cancer antibody; Developmental Biology antibody; Gene Regulation antibody; Metabolism antibody; Signaling Transduction antibody
Calculated Mw	52 kDa
PTM	Phosphorylated on serine by BMP (bone morphogenetic proteins) type 1 receptor kinase.

Images



ARG63942 anti-SMAD9 antibody WB image

Western Blot: Human Skin lysate (35 µg protein in RIPA buffer) stained with ARG63942 anti-SMAD9 antibody at 0.3 µg/ml dilution.



ARG63942 anti-SMAD9 antibody IHC-P image

Immunohistochemistry: Paraffin-embedded Human kidney tissue. Antigen Retrieval: Steam tissue section in Citrate buffer (pH 6.0). The tissue section was stained with ARG63942 anti-SMAD9 antibody at 5 µg/ml dilution followed by AP-staining.