

## ARG63938 anti-CKB / Brain Creatine Kinase antibody

Package: 100 µg  
Store at: -20°C

### Summary

Product Description	Goat Polyclonal antibody recognizes CKB / Brain Creatine Kinase
Tested Reactivity	Hu
Predict Reactivity	Ms, Rat, Cow, Dog, Pig
Tested Application	WB
Host	Goat
Clonality	Polyclonal
Isotype	IgG
Target Name	CKB / Brain Creatine Kinase
Species	Human
Immunogen	C-KPSDEHKTDLNPDN
Conjugation	Un-conjugated
Alternate Names	Creatine kinase B-type; EC 2.7.3.2; BCK; B-CK; CKBB; Creatine kinase B chain; HEL-S-29; HEL-211

### Application Instructions

Application table	Application	Dilution
	WB	0.1 - 0.3 µg/ml
Application Note	WB: Recommend incubate at RT for 1h. * The dilutions indicate recommended starting dilutions and the optimal dilutions or concentrations should be determined by the scientist.	

### Properties

Form	Liquid
Purification	Purified from goat serum by ammonium sulphate precipitation followed by antigen affinity chromatography using the immunizing peptide.
Buffer	Tris saline (pH 7.3), 0.02% Sodium azide and 0.5% BSA
Preservative	0.02% Sodium azide
Stabilizer	0.5% BSA
Concentration	0.5 mg/ml
Storage instruction	For continuous use, store undiluted antibody at 2-8°C for up to a week. For long-term storage, aliquot and store at -20°C or below. Storage in frost free freezers is not recommended. Avoid repeated freeze/thaw cycles. Suggest spin the vial prior to opening. The antibody solution should be gently mixed before use.
Note	For laboratory research only, not for drug, diagnostic or other use.

## Bioinformation

---

### Database links

[GeneID: 1152 Human](#)

[Swiss-port # P12277 Human](#)

### Background

The protein encoded by this gene is a cytoplasmic enzyme involved in energy homeostasis. The encoded protein reversibly catalyzes the transfer of phosphate between ATP and various phosphogens such as creatine phosphate. It acts as a homodimer in brain as well as in other tissues, and as a heterodimer with a similar muscle isozyme in heart. The encoded protein is a member of the ATP:guanido phosphotransferase protein family. A pseudogene of this gene has been characterized. [provided by RefSeq, Jul 2008]

### Research Area

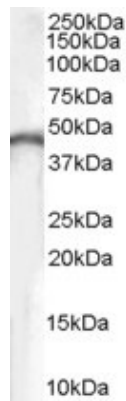
Cancer antibody; Metabolism antibody; Neuroscience antibody; Signaling Transduction antibody

### Calculated Mw

43 kDa

## Images

---



ARG63938 anti-CKB / Brain Creatine Kinase antibody WB image

Western Blot: human brain lysate (35 µg protein in RIPA buffer) stained with ARG63938 anti-CKB / Brain Creatine Kinase antibody at 0.1 µg/ml dilution.