

ARG63916 anti-EIF2C1 / AGO1 antibody

Package: 100 µg
Store at: -20°C

Summary

Product Description	Goat Polyclonal antibody recognizes EIF2C1 / AGO1
Tested Reactivity	Hu
Predict Reactivity	Ms, Rat, Dog
Tested Application	IHC-P, WB
Specificity	This product is not expected to cross-react with EIF2C2, EIF2C3 and EIF2C4.
Host	Goat
Clonality	Polyclonal
Isotype	IgG
Target Name	EIF2C1 / AGO1
Species	Human
Immunogen	C-KNASYNLDPYIQEF
Conjugation	Un-conjugated
Alternate Names	GERP95; Q99; eIF2C 1; EIF2C; EIF2C1; Argonaute RISC catalytic component 1; Argonaute1; Protein argonaute-1; hAgo1; Putative RNA-binding protein Q99; eIF-2C 1; Eukaryotic translation initiation factor 2C 1

Application Instructions

Application table	Application	Dilution
	IHC-P	2.5 µg/ml
	WB	0.3 - 1 µg/ml
Application Note	WB: Recommend incubate at RT for 1h. IHC-P: Antigen Retrieval: Steam tissue section in Citrate buffer (pH 6.0). * The dilutions indicate recommended starting dilutions and the optimal dilutions or concentrations should be determined by the scientist.	

Properties

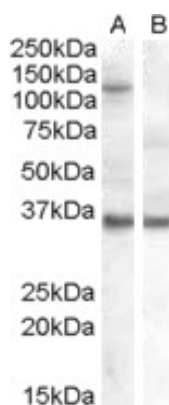
Form	Liquid
Purification	Purified from goat serum by ammonium sulphate precipitation followed by antigen affinity chromatography using the immunizing peptide.
Buffer	Tris saline (pH 7.3), 0.02% Sodium azide and 0.5% BSA
Preservative	0.02% Sodium azide
Stabilizer	0.5% BSA
Concentration	0.5 mg/ml

Storage instruction	For continuous use, store undiluted antibody at 2-8°C for up to a week. For long-term storage, aliquot and store at -20°C or below. Storage in frost free freezers is not recommended. Avoid repeated freeze/thaw cycles. Suggest spin the vial prior to opening. The antibody solution should be gently mixed before use.
Note	For laboratory research only, not for drug, diagnostic or other use.

Bioinformation

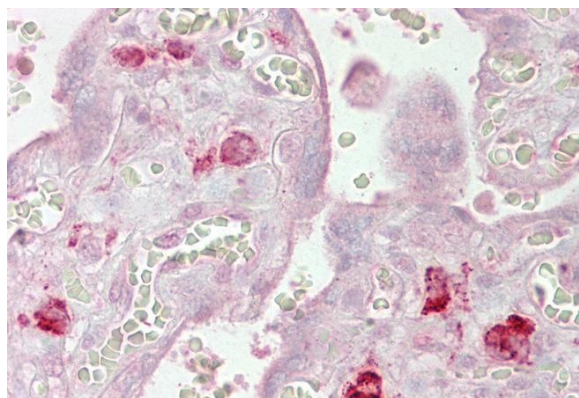
Database links	GeneID: 26523 Human Swiss-port # Q9UL18 Human
Background	This gene encodes a member of the Argonaute family of proteins which play a role in RNA interference. The encoded protein is highly basic, and contains a PAZ domain and a PIWI domain. It may interact with dicer1 and play a role in short-interfering-RNA-mediated gene silencing. This gene is located on chromosome 1 in a cluster of closely related family members including argonaute 3, and argonaute 4. [provided by RefSeq, Jul 2008]
Research Area	Cell Biology and Cellular Response antibody; Gene Regulation antibody
Calculated Mw	97 kDa

Images



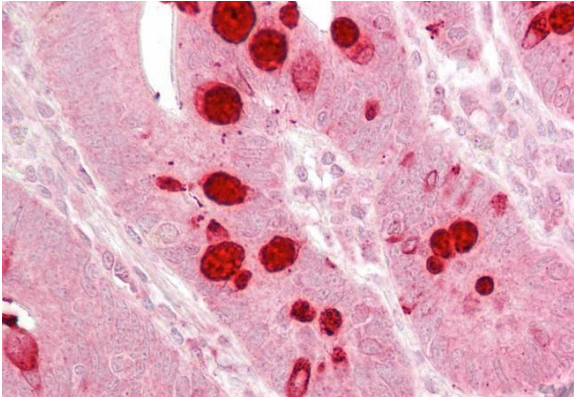
ARG63916 anti-EIF2C1 / AGO1 antibody WB image

Western Blot: 1). EIF2C1 expressing plasmid transfected; 2) Mock transfection HEK293 cell lysate stained with ARG63916 anti-EIF2C1 / AGO1 antibody



ARG63916 anti-EIF2C1 / AGO1 antibody IHC-P image

Immunohistochemistry: Paraffin-embedded Human placenta tissue. Antigen Retrieval: Steam tissue section in Citrate buffer (pH 6.0). The tissue section was stained with ARG63916 anti-EIF2C1 / AGO1 antibody at 2.5 µg/ml dilution followed by AP-staining.



ARG63916 anti-EIF2C1 / AGO1 antibody IHC-P image

Immunohistochemistry: Paraffin-embedded Human small intestine tissue. Antigen Retrieval: Steam tissue section in Citrate buffer (pH 6.0). The tissue section was stained with ARG63916 anti-EIF2C1 / AGO1 antibody at 2.5 µg/ml dilution followed by AP-staining.